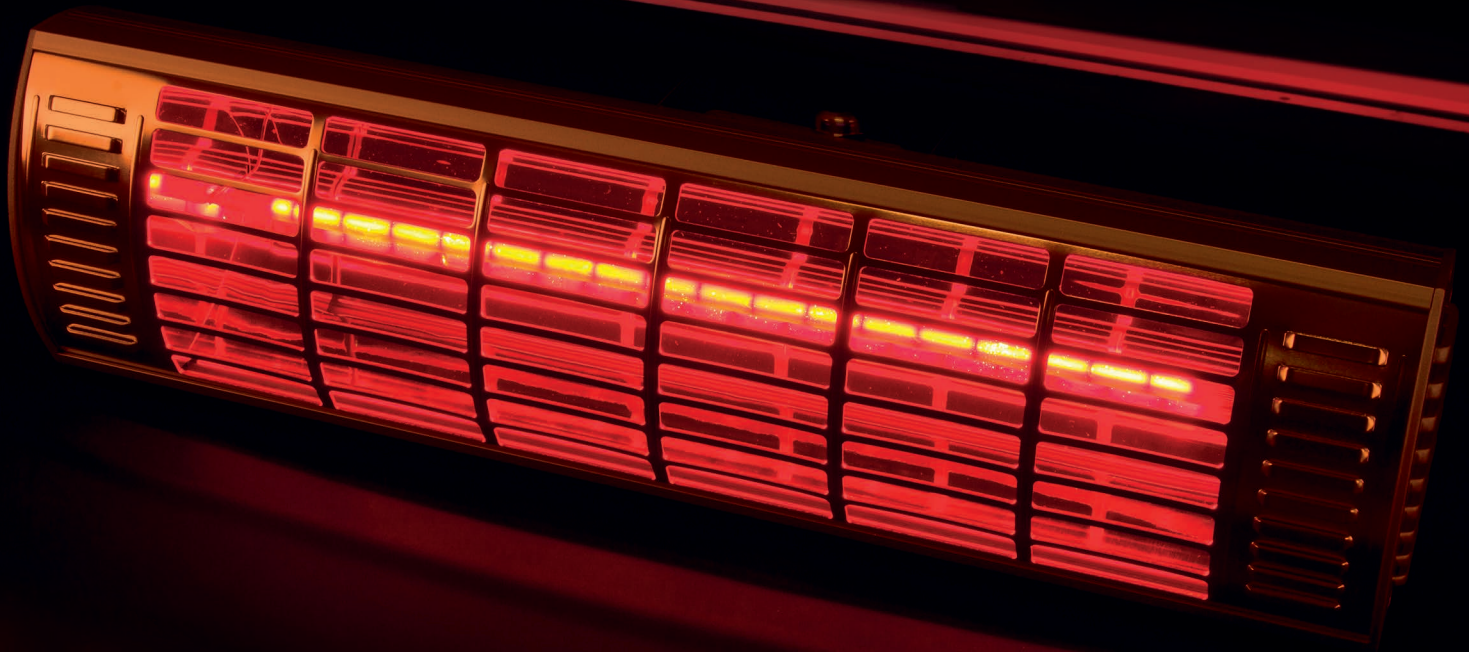


CasaFan

INFRARED-HEATERS



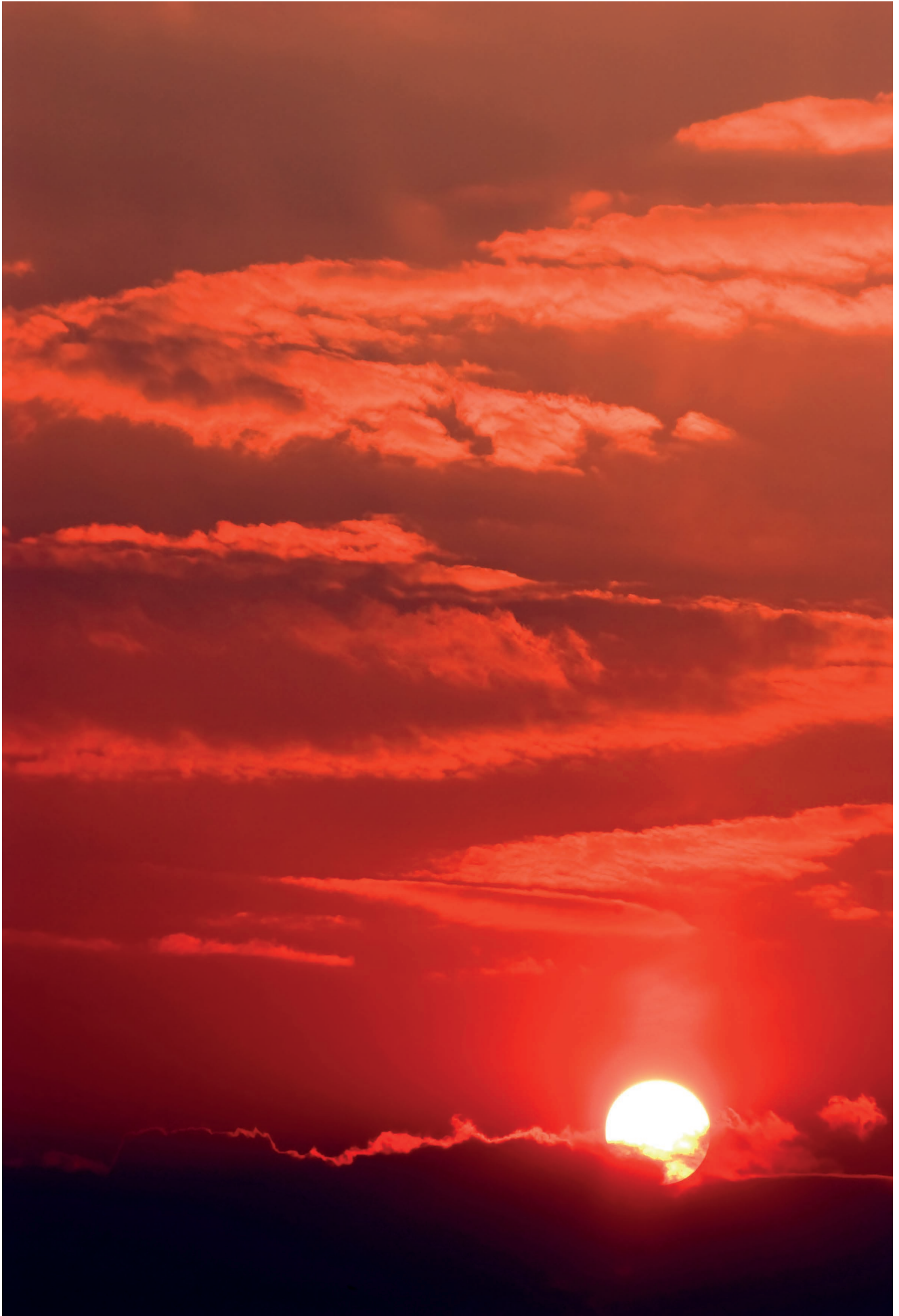
CasaTherm W
LowGlare



Hathor IP65
LowGlareUltra



CasaTherm
Heatpanel BlackLight



CONTENTS

Fundamentals of infrared radiation	page 4 - 5
What is the meaning of Gold LowGlare, LowGlareUltra and BlackLight?	page 6
CasaTherm Heatpanel BlackLight 1500 / 1800 / 2400 / 3200	page 7 - 10
CasaTherm W Gold LowGlare 1500 / 2000	page 11 - 13
CasaTherm 1500 Slimdesign Gold 1500.....	page 14 - 15
CasaTherm S1800 Gold	page 16 - 17
Fiore 1200 / 1800	page 18 - 21
Sharklite 1200 / 1800	page 22 - 23
Lucciola 1200	page 24 - 27
CasaTherm S3x1000	page 28 - 29
Petalo 1200 / 1800	page 30 - 31
Hathor IP65 LowGlareUltra 1500 / 3000 / 4500.....	page 32 - 35
Thermologika Soleil Plus	page 36 - 38
Hathor 2000 / 4000 / 6000	page 39 - 41
Fiore Triangolo 3600	page 42 - 43
Stiluovo 3600	page 44 - 47
Accessories and Fittings	page 48 - 49
Product Overview	page 50 - 53
Possible applications.....	page 54
Advantages	page 55

HALOGEN INFRARED RADIANT HEATERS

Compared with gas radiant heaters and other methods of heating which merely warm the surrounding air, the outstanding feature of halogen infrared radiant heaters, particularly as a result of their high short-wave radiation component, is that they heat bodies and objects directly.

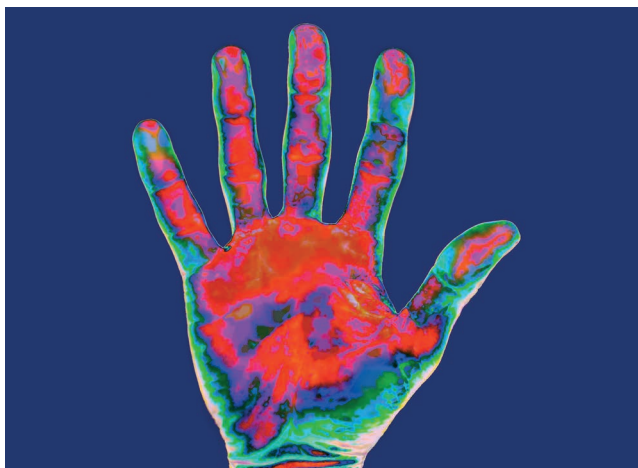


The alternative to expensive and ineffective gas radiant heaters

Understanding infrared radiation



Despite low temperatures solar radiation provides warmth



An infrared image of a human hand showing the infrared radiation it emits

Infrared radiation is part of the electromagnetic spectrum and is an invisible portion of natural sunlight, constituting part of the sun's radiant heat.

Any body with a temperature above absolute zero (-273 °C), for example an ice cube, emits infrared radiation. As the temperature of this body rises the wavelength of this infrared radiation decreases, i.e. the hotter the heat source, the greater the amount of infrared radiation emitted.

The shorter the wavelength of an infrared radiator the higher the proportion of short-wave radiation, and thus bodies and not just the ambient air are warmed more directly and deeply.

Medium and long-wave (depending on the distribution of the radiation) infrared emitters primarily heat the ambient air, which dissipates rapidly out of doors because of wind movement.

Solar radiation is a perfect example, consisting as it does, of UV radiation, visible light and also invisible infrared heat radiation. The positive effect of infrared heat can be illustrated simply: **if we move out of the shadows into the sunlight, we feel warmer, although the air temperature remains unchanged.**

Differences and penetration depth within infrared radiation

The infrared spectrum is divided into the following regions, as defined by DIN 5031. Crucial for effective use outdoors is the penetration depth below the surface of the skin that can be felt as heat despite air movements.

Infrared region	Wave length (nm)	Spectral band	Approx. penetration depth (mm)
IR-A (near infrared)	780 up to 1,400	short-wave	up to 5.0
IR-B (near infrared)	1,400 up to 3,000	medium-wave	up to 0.5
IR-C (mid infrared)	3,000 up to 5,000	long-wave	up to 0.1
IR-C (far infrared)	5,000 up to 10,000	long-wave	up to 0.1

HALOGEN INFRARED RADIANT HEATERS

Comparative running costs of gas-fired and halogen infrared radiant heaters

The power ratings (kW) of gas radiant and halogen infrared radiant heaters are not directly comparable. A significant proportion of the heat output of gas radiant heaters is immediately lost through uncontrolled rising heat.



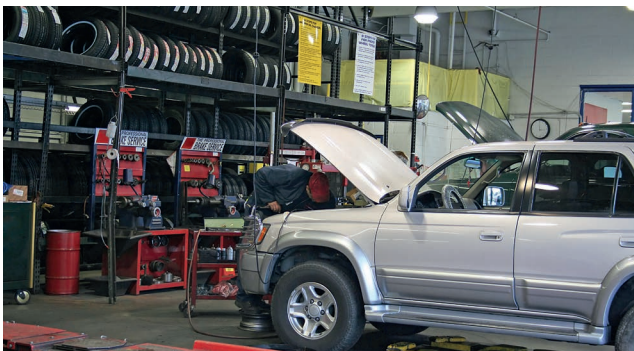
Even after 540 hours, which corresponds to a daily use of 3 hours over 6 months, the cost of using a gas heater is approximately € 307 more than when using a halogen infrared radiant heater.

Heater type	Gas	Infrared
Power	7 kW	1.8 kW
Heating area, approx.	10 m ²	10 m ²
Hrl. consumption, approx.	0.5 kg	1.8 kW
Cost/hour, approx.	€ 1.091	€ 0.522
Incremental cost*	+ 307 €	

*Calculation assumptions

Radiant gas heater with a power consumption of 7 kW and a comparable halogen infrared radiant heater, such as the CasaTherm model, consuming 1.8 kW of electrical power. This consumption corresponds to maximum power output. An 11 kg gas bottle is assumed to cost € 24.00 and the price of electricity € 0.29 per kWh.

Infrared radiant heater applications



Halogen infrared radiant heaters are characterised by the varied and flexible ways in which they can be used, especially outdoors, where conventional heated air is dispersed by the wind and by air movements. The direct (deep penetration) heat of a halogen infrared radiant heater is unaffected by wind and weather. Their important characteristics are an extremely short warm-up time, high energy efficiency and IPX5-compliant designs that are waterproof and weather-resistant.

Applications of modern halogen infrared radiant heaters:

Smoking areas	Snack bars
Open-air restaurants	Building sites
Pub gardens	Outdoor seating
Pavement cafés	Spas
Workshops	Terraces
Entrance lobbies	Balconies
Work places	Patios
Warehouses	Conservatories
Drying processes	Gazebos
Stables	Marquees
Market stalls	Bathrooms
Factory buildings	Parasols
Agriculture	Churches

What is the meaning of Gold LowGlare, LowGlareUltra und BlackLight?

Goldröhre

A radiant heater in the short wave-length range always emits visible light as the frequency responses lay very close together. To date it is not possible to produce a shortwave infrared radiant heater that emits no visible reddish light at a marketable price.

In order to minimize unwanted glare, manufacturers of shortwave infrared lamps are using filters that are designed to reduce the amount of visible light without affecting the heat output.

Depending on the manufacturer the quartz glass lamp is mixed, for example, with ruby colour pigments. The most demanding and also the most cost intensive method of filtering the amount of visible light is to coat the exterior of the lamp with gold.



The new **CasaTherm Blacklight series** works without emitting any visible portion of light. Instead of a lamp it uses a stainless steel heating coil embedded in aluminium and releases its radiant energy mainly in the medium and long wave infrared spectrum - ideal for use indoors and in wind-protected outdoor areas.



...with a 2000 W gold lamp...

LowGlare technology makes available an additional filter coating on the inside of the heating lamp that, using a thermochemical process, develops its optimum filter performance approximately 2 minutes after being switched on. Compared to a standard gold lamp this coating reduces the dazzling portion of visible light by **up to 70%** and spreads a candlelight atmosphere and tranquil warmth over your patio in no time at all.



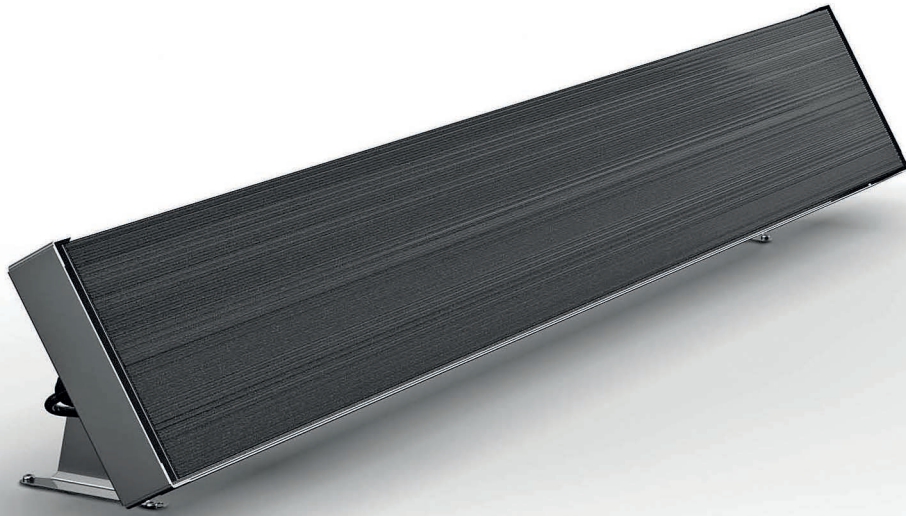
...with a 2000 W gold lamp with LowGlare...

Completely new to the market, the **LowGlareUltra technology** from a German lamp manufacturer is used for the first time in the new **Hathor IP65 LowGlareUltra models**. A modified medium inside the lamp together with a new type of filament alloy and an additional interior coating on the quartz glass enable a reduction in the dazzling portion of visible light by **up to 90%**. Only a deep red glow can be seen.



...and with a gold lamp with LowGlareUltra technology.

CASATHERM HEATPANEL BLACKLIGHT



CasaTherm Heatpanel BlackLight 1800, #7718 with wall bracket (included)

Ideal for areas sheltered from the wind such as terraces, balconies, outdoor areas of catering, as well as interiors such as indoor swimming pools, tents, winter gardens and rooms that are only used occasionally.

- innovative infrared heating technology
- Power ratings of 1,500 up to 3,200 watts for individual requirements and needs
- IR-B and IR-C provide warmth without light emission
- Protection class IP55 - highest electrical safety despite rain and snow (IP55: protected against water jets)
- shapely solution for architecturally demanding indoor and sheltered outdoor areas
- direct heating through infrared deep-heat
- low body temperature on the back, no risk of fire
- Aluminium design housing, natural aluminum with heating element, aluminum matt black anodized
- large heating area up to 12 m²
- wall bracket included
- wide range of possible applications
- no emissions
- maintenance-free

Due to the use of corrosion-resistant materials, the CasaTherm Heat Panel Blacklight can be used outdoors even in salty air in coastal areas.

CasaTherm Heat Panel Blacklight is available in 4 different sizes and power ratings, to meet different structural and user demands.

The high protection class IP55 ensures highest electrical safety even with direct exposure.

Installation can be done (bracket can be adjusted and tilted up to an angle of 45°) directly on the wall using the included wall bracket.

In addition, many accessories are available for ceiling mounting, double mounting next to and behind one another, as well as spacers for high ceilings. Also, a suspension with chains is possible.

The ideal mounting height is 2.5 m from the floor for ceiling mounting or 2.0 m for wall mounting with a tilt angle of 45°.

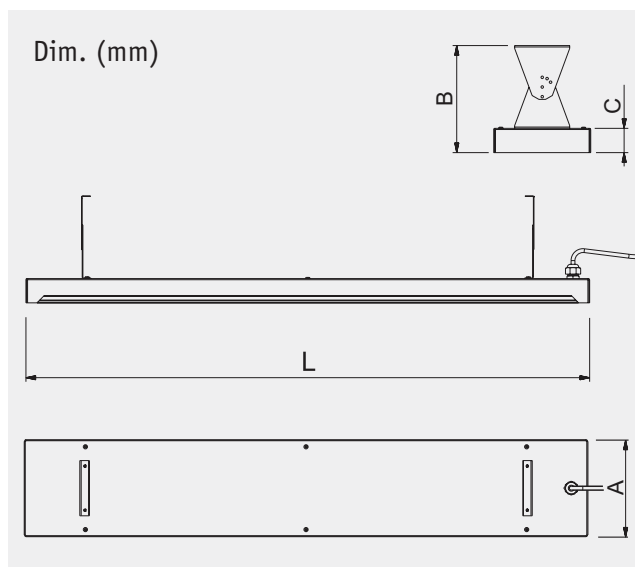
The temperature resistant silicone cable has a length of 3 m for fixed installation, Schuko plug subsequently possible.

Accessories for any installation

Due to an optimized thermal separation, the surface temperature never exceeds 90 °C. Thus, the installation can be done easily on all noncombustible surfaces. When using the corresponding spacer to comply with the minimum distances, the installation can be done even on wood surfaces.

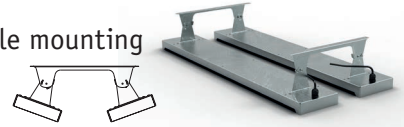
Accessory for double mounting side by side and multiple installation one behind the other is available to meet any structural and architecturally challenging situation.

Other accessories such as dimmers, timers, remote controls etc. are available.



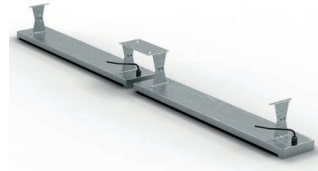
7701:

Accessory for double mounting of 2 BlackLight side by side.



7702:

Accessory for serial mounting of 2 BlackLight one behind the other.



7703:

Wall/ceiling spacer 250 mm



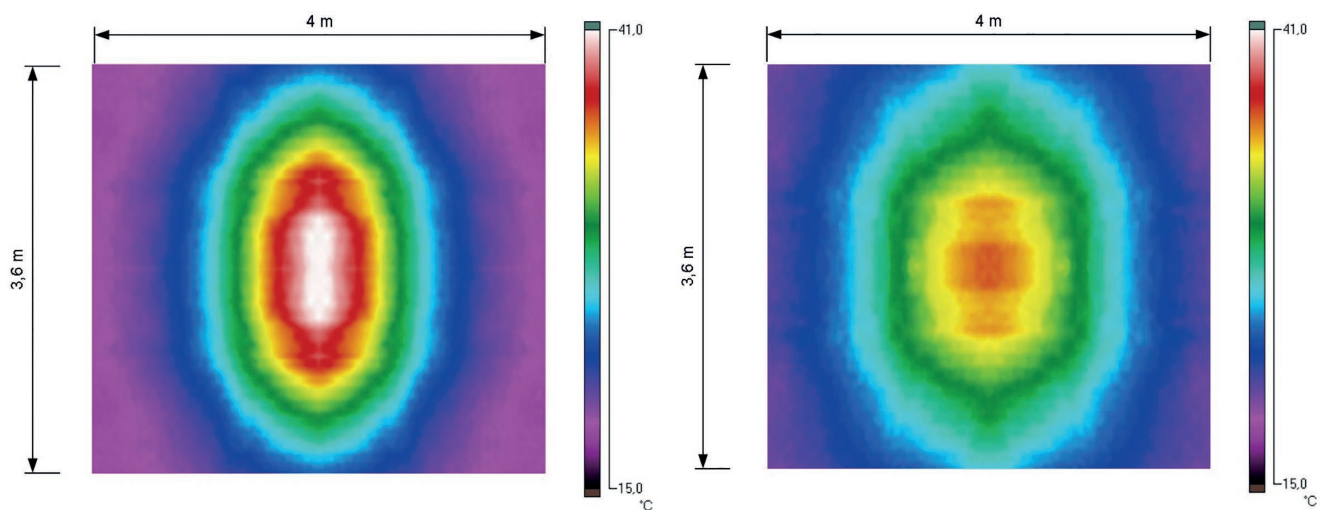
Accessories	Code No.
Controller/Dimmer IP54 (3.2 kW)	98625
Double mounting kit	7701
Serial mounting kit	7702
Wall/ceiling spacer	7703

Model	A	B	C	L (mm)
7715	176	194	44	1,022
7718	176	194	44	1,172
7724	176	194	44	1,472
7732	176	194	44	1,872

Data	CasaTherm Heatpanel BlackLight			
	1500	1800	2400	3200
Code No.	7715	7718	7724	7732
Heating area approx. (m ²)	5	6	9	12
Min. distance to ceiling (m)	0.25			
Length L (mm)	1022	1172	1472	1872
Weight approx. (kg)	6.0	6.8	8.4	10.3
Power consumption (W)	1,500	1,800	2,400	3,200
Current consumption approx. (A)	6.8	8.0	11.0	14.0
Voltage / Frequency (V / Hz)	220-240 / ~50/60			
Protection class / Safety class	IP55 / I			
Colour	aluminum / matt black			
Material	Aluminium / Stainless steel			



The models of the CasaTherm Heat Panel Blacklight series are ideal for heating sheltered outdoor areas and indoor areas without own heating, eg winter gardens.



Thermal image of the CasaTherm Heat Panel Blacklight 3200 at 1.0 m and 1.5 m distance. Normally in this area the upper bodies of users are.





CASATHERM W GOLD LOWGLARE



Casatherm W Gold LowGlare mounted horizontal and vertical with optional stand with base STA1 #70010 (2.50 m high) as well as with universal clamp for pipes/poles UK1 #70041

CASATHERM W GOLD LOWGLARE



Now also with remote control:
CasaTherm W2000 FB #70030 Gold
LowGlare (here colour anodized
aluminium) dimmable in 3 steps
(50% - 75% - 100%) !

NEW!
remote control
dimmable



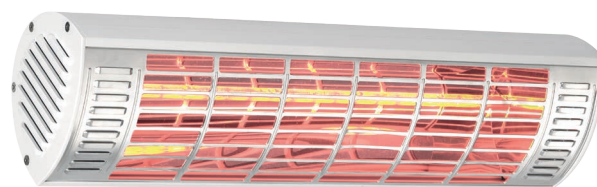
Features CasaTherm W2000 and W1500 Gold LowGlare

- latest halogen infrared technology
- high power rating - gold lamp with 1,500 or 2,000 watts
- LowGlare internal coating - 70% less dazzling light proportion - Candlelight atmosphere in comforting warmth
- high short-wave radiation component (IR-A)
- direct warmth without getting hot
- direct heating through infrared deep-heat
- NEW! Now also remote control dimmable in 3 steps (50% - 75% - 100%)
- unaffected by weather conditions: no heat loss due to movement of air
- ideal for use in outdoor areas (IP65: protected against water jets)
- robust design housing made of aluminium in colour natural alu or matt white
- large heating area of up to 12 m²
- wall bracket included
- wide range of possible applications
- no emissions
- maintenance-free

The new profile of the reflector ensures, unlike many other models, that the temperature does not exceed 100 °C on the back of the radiant heater. Thus, even with the included spacer when mounted on wood, no fire risk.

The CasaTherm W2000 and W1500 Gold LowGlare halogen infrared radiant heaters are characterized by their robust construction, its high flexibility as well as for their beautiful form design.

The infrared halogen gold lamp with LowGlare internal coating with high short-wave radiation component has a lifespan of approx. 5,000 hrs.



CasaTherm W2000 Gold LowGlare matt white, #70025 with wall bracket (included)

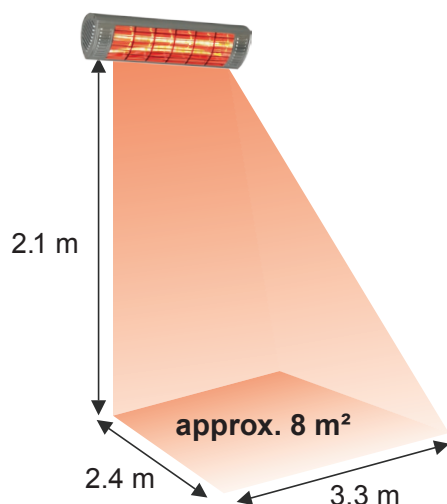
It can be mounted directly on the wall or with the optional accessories pivotally mounted on walls, ceilings, pipes/poles, parasols or a on a stable stand with base. CasaTherm W2000 and W1500 Gold LowGlare have 2,000 or 1,500 watts power rating, and are delivered with a 5m rubber cable and Schuko plug.

CasaTherm W2000 Gold LowGlare with optional accessory chain suspension
KAH #70043

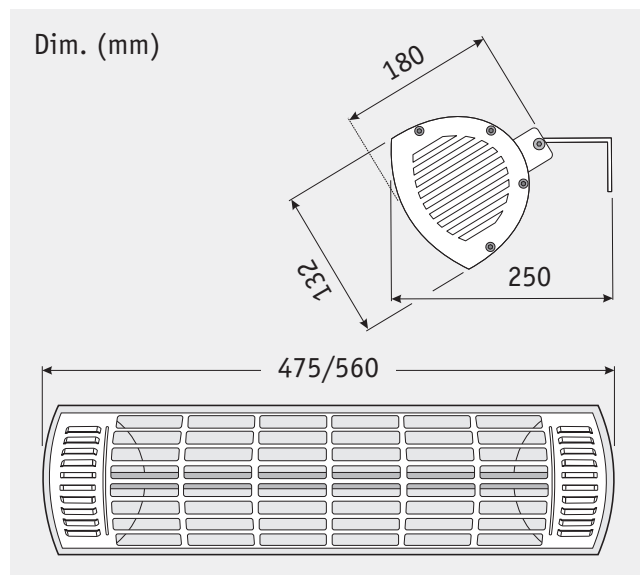
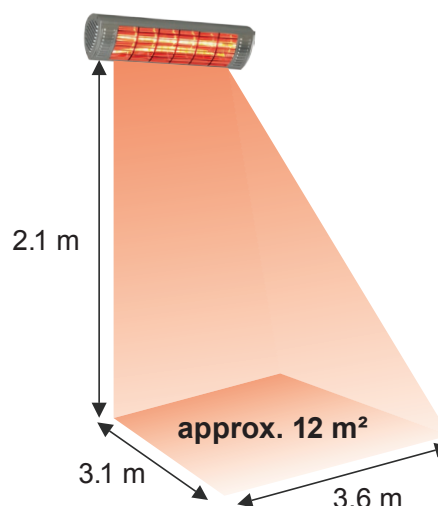


Heating area CasaTherm W Gold LowGlare

CasaTherm W1500 Gold Low Glare



CasaTherm W2000 + R/C Gold Low Glare

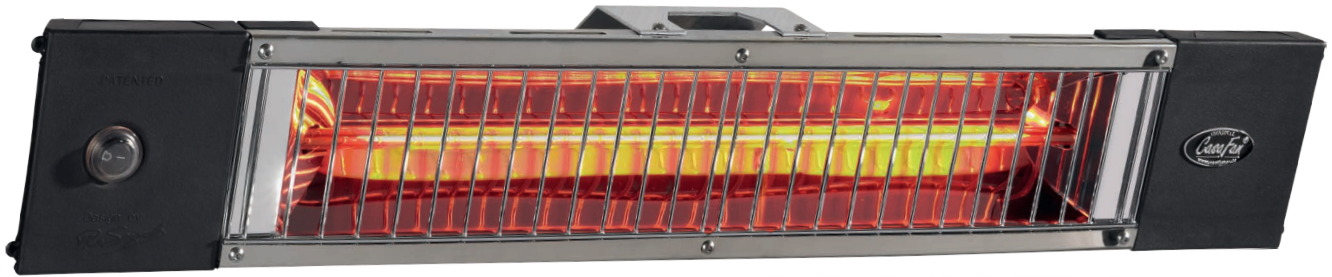


Accessories CasaTherm W	Code No.
Stand with base STA1	70010
Universal clamp for pipes UK1	70041
Universal clamp for pipes UK2	70045
Chain suspension KAH	70043
Controller/Dimmer IP54 (2.3 kW)*	98610
Controller/Dimmer IP54 (3.2 kW)*	98625
R/C dimmable, IP54 (max. 2.0 kW)*	71100
Repl. lamp Gold LowGlare 1,500 W	70042
Repl. lamp Gold LowGlare 2,000 W	70044
Smokers control/Timer*	980001x

* not suitable for models with remote control (-FB)

Data	CasaTherm W1500 Gold LowGlare	CasaTherm W2000 Gold LowGlare	CasaTherm W2000 FB Gold LowGlare
Code No. (matt white)	70027	70025	70031
Code No. (natural aluminium)	70028	70026	70030
Heating area (m ²)	8	12	12
Dimmable with remote control	no		yes
Min. distance to ceiling (m)	0.3		
Lamp lifespan (hrs.)	approx. 5,000		
Dimensions W x H x D (mm)	475 x 132 x 180		560 x 132 x 180
Weight (kg)	2.7	3.3	3.8
Power consumption (W)	1,500	2,000	2,000
Current consumption approx. (A)	6.7	8.7	8.7
Voltage / Frequency (V / Hz)	220-240 / ~50/60		
Protection class / Safety class	IP65 / I		
Material	Aluminium		

CASATHERM 1500 SLIMDESIGN GOLD



Features CasaTherm Slimdesign

- latest halogen infrared technology
- high power rating - gold lamp with 1,500 watts
- high short-wave radiation component (IR-A)
- direct warmth without getting hot
- direct heating through infrared deep-heat
- unaffected by weather conditions: no heat loss due to movement of air
- ideal for use in outdoor areas (IP55: protected against water jets)
- robust design housing made of stainless steel
- large heating area of up to 7.5 m²
- wide range of possible applications
- no emissions
- maintenance-free

The CasaTherm Slimdesign infrared radiant heater is characterized by its high performance and an attractive, ultra-slim design.

The housing is a combination of stainless steel and weather resistant, black nylon fiberglass.

The infrared halogen gold lamp with high short-wave radiation component has a lifespan of approx. 5,000 hours and creates a pleasant atmosphere without strong glare.

Installation can be done flexibly with the included wall bracket on walls or on stands with base.



Chains for suspension included

The CasaTherm Slimdesign Gold with 1,500 watts power is delivered with on/off switch on the unit and a 2.8 m rubber cable and Schuko plug.

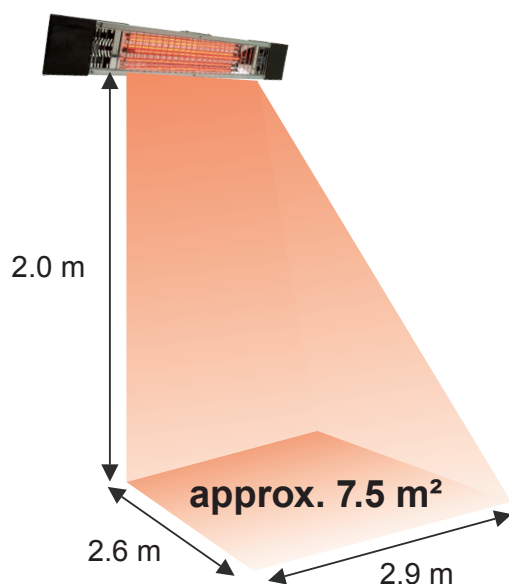
Goldröhre



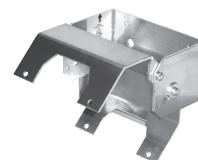
CasaTherm 1500 Slimdesign Gold with optional stand model Totem #702

Heating area CasaTherm Slimdesign Gold

CasaTherm 1500 Slimdesign Gold

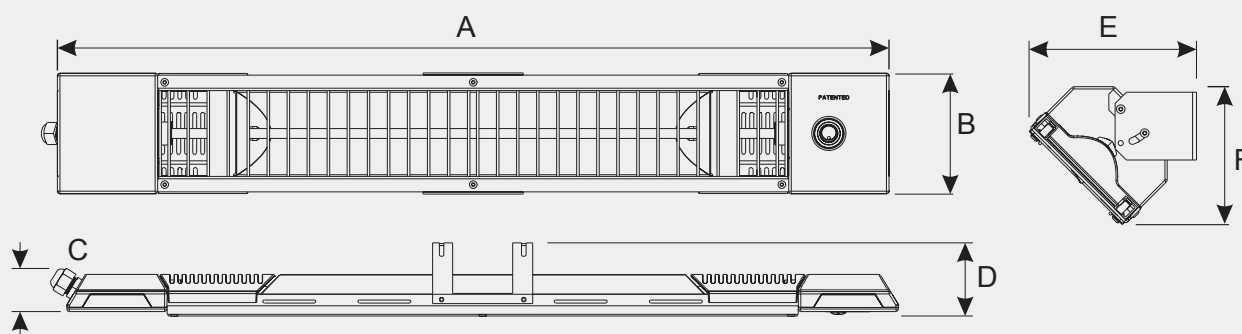


The wall/tripod bracket made of aluminium with tilt adjustment is included.



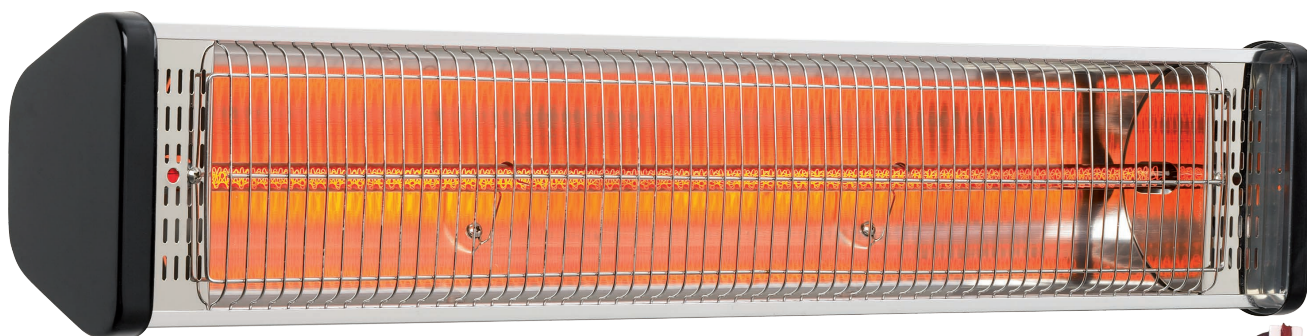
Accessories	Code No.
Controller/Dimmer IP54 (2.3 kW)	98610
Controller/Dimmer IP54 (3.2 kW)	98625
R/C dimmable IP54 (max. 2.0 kW)	71100
Stand model Totem	702
Repl. lamp gold 1,500 W	3026
Smokers control/Timer	980001x

Dim. (mm) A = 730 C = 43 E = 148
 B = 120 D = 73 F = 122



Data	CasaTherm 1500 Slimdesign Gold
Code No. (with cable/plug and switch)	70728
Heating area (m²)	7.5
Recommended min. distance to ceiling (m)	0.3
Lamp lifespan (hrs.)	approx. 5,000
Dimensions W x H x D (mm)	730 x 38 x 120
Weight (kg)	2.6
Power consumption (W)	1,500
Current consumption approx. (A)	6.5
Voltage / Frequency (V / Hz)	220-240 / ~50/60
Protection class / Safety class	IP55 / I
Colour	black / Stainless steel
Material	Stainless steel / Plastic

CASATHERM S1800 GOLD



CasaTherm S1800 Gold, #71001 with wall bracket (included)

Features CasaTherm S1800 Gold

- latest halogen infrared technology
- high short-wave radiation component (IR-A)
- direct warmth without getting hot
- direct heating through infrared deep-heat
- unaffected by weather conditions: no heat loss due to movement of air
- ideal for use in outdoor areas (IP55: protected against water jets)
- robust design housing
- high power rating - gold lamp with 1,800 watts
- large heating area of up to 10 m²
- wall bracket and remote control included
- wide range of possible applications
- no emissions
- maintenance-free

The CasaTherm S1800 Halogen infrared radiant heater is characterized by its robust construction, its high flexibility and its low acquisition cost.

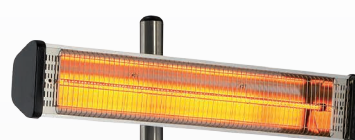
The infrared halogen gold lamp with high shortwave radiation component has a lifespan of approx. 5,000 hours.

It can be mounted directly on the wall or with the optional accessories pivotally mounted on walls, ceilings, pipes/poles, parasols or on a stable stand with base.

The CasaTherm S1800 Gold has 1,800 watts power and is supplied with a remote control, pull switch for standby, on/off switch on the unit and a 2.8 m rubber cable and Schuko plug.

NOW NEW:

The approved CasaTherm Model S1800 with premium quality **gold lamp**! Improved effect with the same consumption.



With the included infrared remote control the S1800 Gold CasaTherm can easily be turned on and off from up to 6 meters away

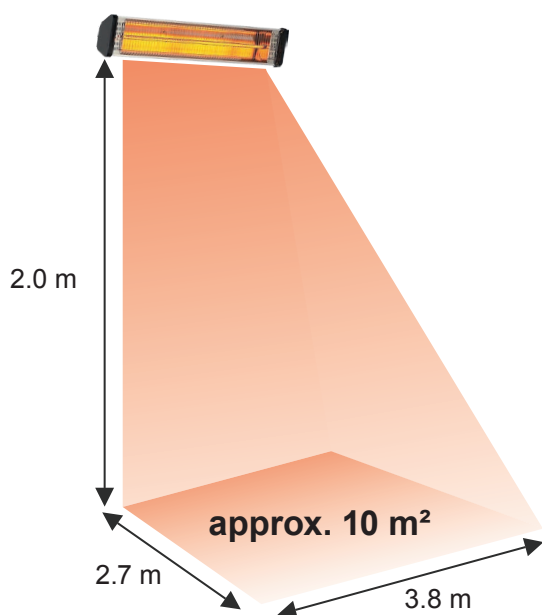


With the pivoting wall bracket # 71014 (optional accessory) the CasaTherm S1800 can be adjusted horizontally and vertically as desired

CasaTherm S1800 Gold with optional stand with base STA1 #70010 (2.50 m high) as well as clamp RK1 #71015

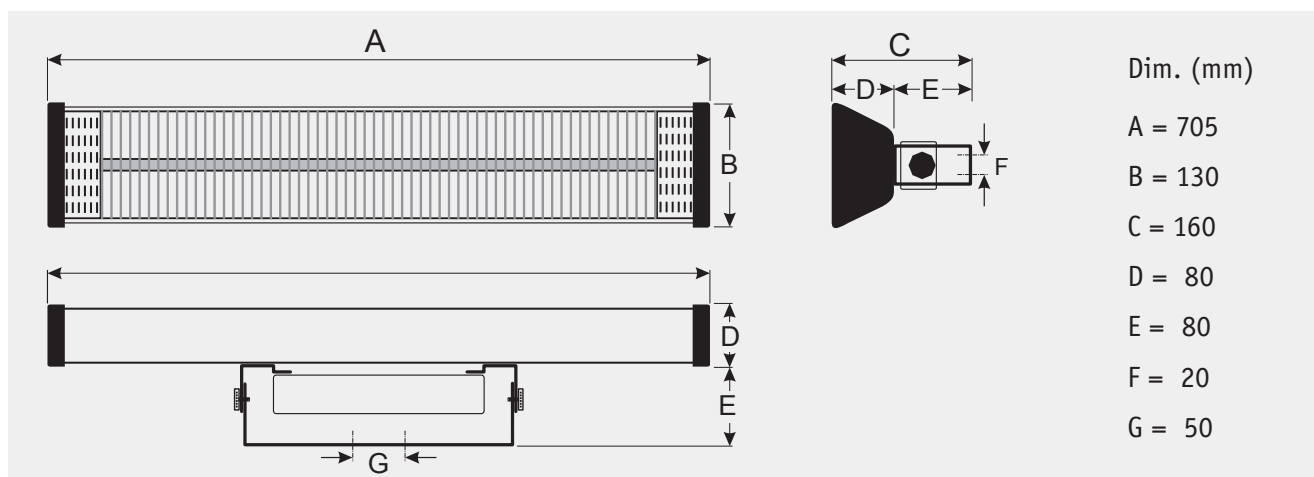
Heating area CasaTherm S1800 Gold

CasaTherm S1800 Gold



The tilt angle can be adjusted freely

Accessories	Code No.
Pivotable wall bracket	71014
Stand with base STA1	70010
Parasol clamp SSK1	71011
Repl. lamp gold 1,800 W	71020
Clamp for pipes/stands RK1	71015
Universal clamp for pipes UK2	70045



Data	CasaTherm S1800 Gold
Code No. (with cable/plug, remote control and switch)	71001
Heating area (m ²)	10
Recommended min. distance to ceiling/parasol (m)	0.3
Lamp lifespan (hrs.)	approx. 5,000
Dimensions W x H x D (mm)	705 x 132 x 140
Weight (kg)	2.68
Power consumption (W)	1,800
Current consumption approx. (A)	8.0
Voltage / Frequency (V / Hz)	220-240 / ~50/60
Protection class / Safety class	IP55 / I
Colour	silver / black
Material	Aluminium / Stainless steel

FIORE 1200 / 1800



FIORE 1800, #767 with wall bracketung #76813

Features Fiore

- latest halogen infrared technology
- short-wave radiation component (IR-A)
- direct warmth without getting hot
- direct heating through infrared deep-heat
- unaffected by weather conditions: no heat loss due to movement of air
- ideal for use in outdoor areas (IP65: protected against water jets)
- robust design housing
- high power rating up to 1,800 watts
- large heating area of up to 9 m²
- wide range of possible applications
- no emissions
- maintenance-free

The Fiore halogen infrared radiant heater is characterised by its rugged design and low cost.

The yellow halogen infrared short-wave lamp with its short-wave radiation component has a lifespan of about 5,000 hours.

Flexible installation possibilities using optional accessories include attachment to walls, ceilings, poles, or to a solid tripod stand. A chain suspension for ceiling mounting is included.

The Fiore has an 1,200 or 1,800 watts heater with an optional on/off switch on the unit itself and a 2.8 m rubber cable and mains plug also available (Code No. 767N/766N) or, as model P for fixed installation without cable and mains plug (Code No. 767NP/766NP).



Fiore with optional accessory pipe/stand bracket #76816 and tripod #2473



Chains for ceiling mounting included

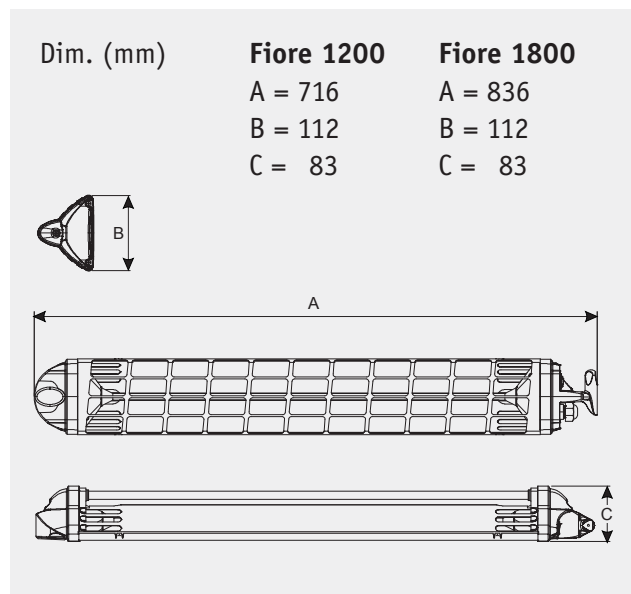


Fiore wall bracket, available as #768MN (black) and #76813 (grey)

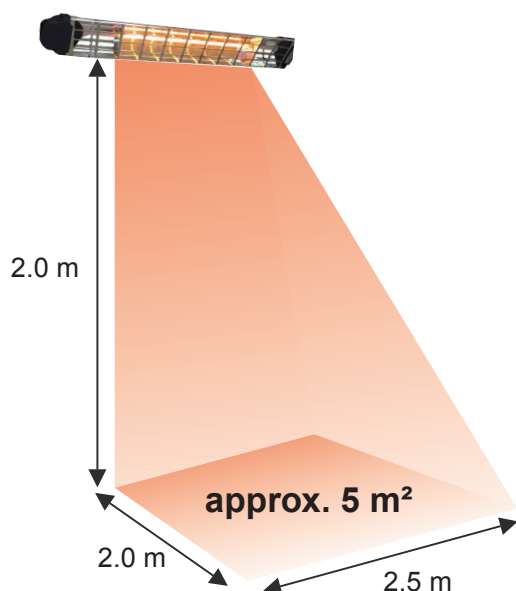


Fiore pipe and stand bracket #768PN

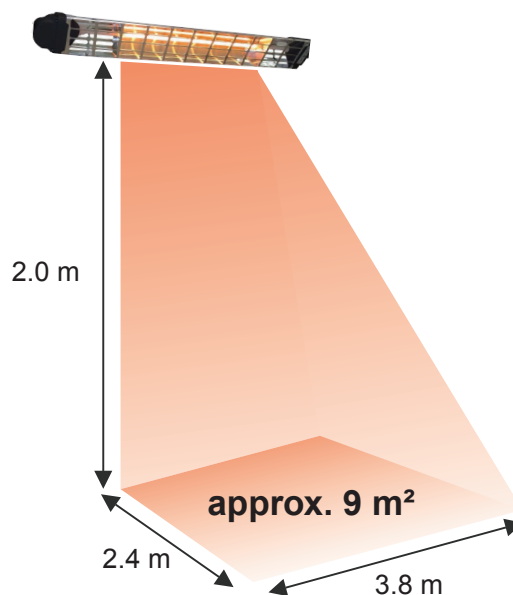
Accessories	Code No.
Wall bracket grey	76813
Wall bracket black	768MN
Pipe/stand bracket	768PN
Controller/Dimmer IP54 (2.3 kW) (only Fiore 1200)	98610
Controller/Dimmer IP54 (3.2 kW) (only Fiore 1200)	98625
Stand model Tripod	2473
Stand with base STA1	70010
Repl. lamp sunny yellow 1,200 W	2450
Repl. lamp sunny yellow 1,800 W	2781
Smokers control/Timer	980001x



Heating area Fiore 1200



Heating area Fiore 1800

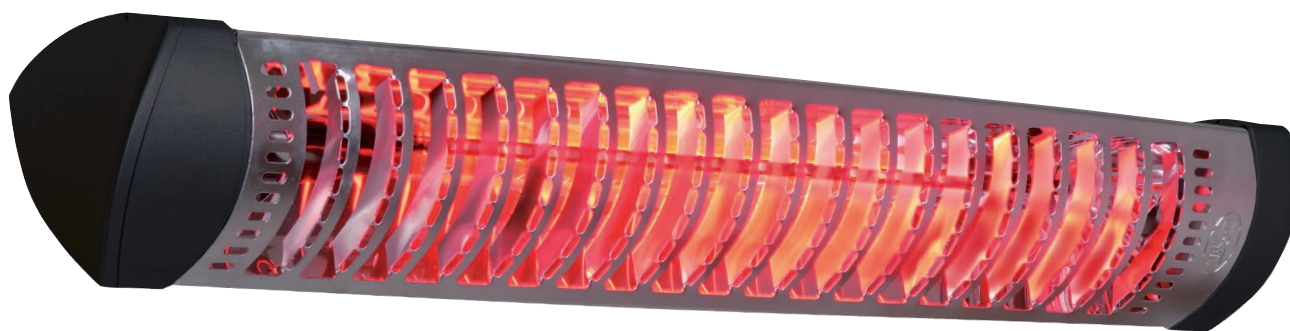


Data	Fiore 1200	Fiore 1800
Code No. (with cable/plug and switch)	766N	767N
Code No. (without cable/plug and switch: model P)	766NP	767NP
Heating area (m ²)	5	9
Recommended min. distance to ceiling (m)	0.4	
Lamp lifespan (hrs.)	approx. 5,000	
Dimensions W x H x D (mm)	712 x 112 x 83	885 x 112 x 83
Weight (kg)	1.1	1.2
Power consumption (W)	1,200	1,800
Current consumption approx. (A)	5.4	8.0
Voltage / Frequency (V / Hz)	220-240 / ~50/60	
Protection class / Safety class	IP65 / I	
Colour	silver / black	
Material	Aluminium / Stainless steel / Plastic	





SHARKLITE 1200 / 1800



Features Sharklite

- latest halogen infrared technology
- high short-wave radiation component (IR-A)
- direct warmth without getting hot
- direct heating through infrared deep-heat
- unaffected by weather conditions: no heat loss due to movement of air
- ideal for use in outdoor areas (IP65: protected against water jets)
- robust design housing
- high power rating up to 1,800 watts
- large heating area of up to 10 m²
- wide range of possible applications
- no emissions
- maintenance-free

The Sharklite halogen infrared radiant heater is characterised by its rugged and stylish design.

The housing is a combination of silver-coloured stainless steel/aluminium and black weather resistant nylon fiberglass.

The ruby halogen infrared short-wave lamp with its high short-wave radiation component creates a pleasant ambiance without a high dazzling effect and has a lifespan of about 5,000 hours.

The installation can be made as fixed installation on walls/ceilings or for flexible use at the optional stand (Totem Code No. 702). A cable suspension for installation on ceilings is available as an option.

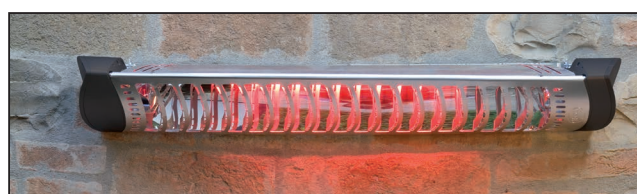
The Sharklite has a 1,200 watts or 1,800 watts heater, with an on/off switch on the unit itself and a 2.8 m rubber cable and mains plug.



Sharklite with optional accessory stand model Totem #702

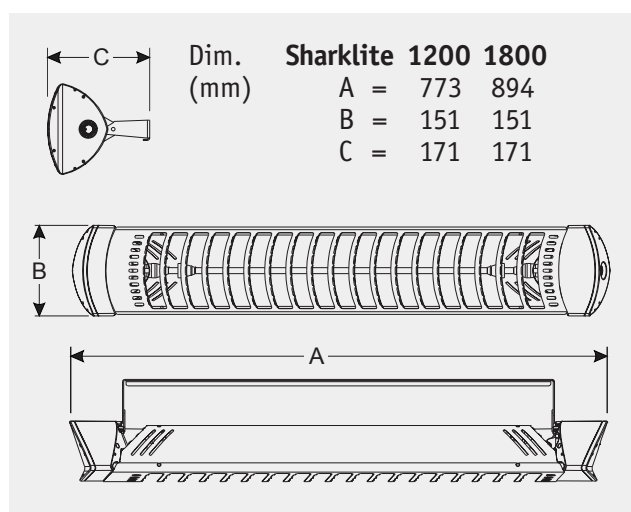


Cable suspension #705 and ceiling suspension available as an optional accessory

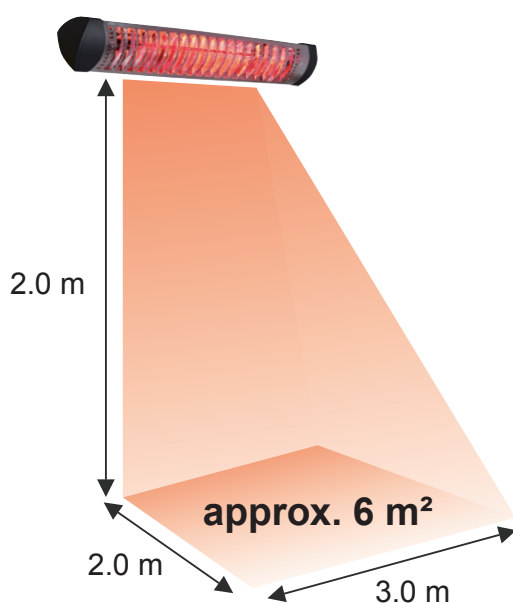


Wall bracket is included

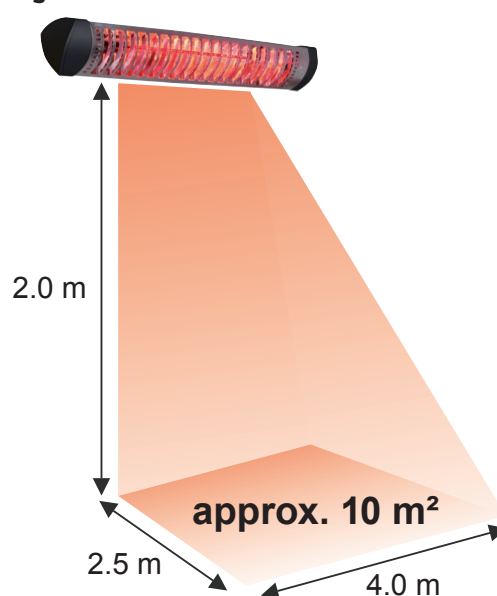
Accessories	Code No.
Cable suspension	705
Controller/Dimmer IP54 (2.3 kW)	98610
Controller/Dimmer IP54 (3.2 kW)	98625
Remote control dim. IP54 (max. 2.0 kW)	71100
Stand model Totem	702
Repl. lamp ruby 1,200 W	3018
Repl. lamp ruby 1,800 W	3024
Smokers control/Timer	980001x



Heating area Sharklite 1200



Heating area Sharklite 1800



Data	Sharklite 1200	Sharklite 1800
Code No. (with cable/plug and switch)	712N	718N
Heating area (m ²)	6	10
Recommended min. distance to ceiling (m)	0.3	
Lamp lifespan (hrs.)	approx. 5,000	
Dimensions W x H x D (mm)	792 x 150 x 100	912 x 150 x 100
Weight (kg)	1.5	1.6
Power consumption (W)	1,200	1,800
Current consumption approx. (A)	5.4	8.0
Voltage / Frequency (V / Hz)	220-240 / ~50/60	
Protection class / Safety class	IP65 / I	
Colour	silver / black	
Material	Stainless steel / Aluminium / Plastic	

LUCCIOLA 1200



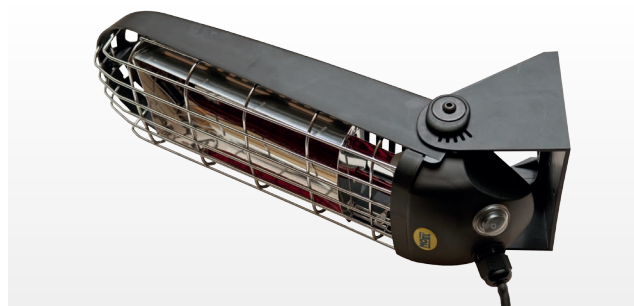
Features Lucciola

- latest halogen infrared technology
- short-wave radiation component (IR-A)
- direct warmth without getting hot
- direct heating through infrared deep-heat
- unaffected by weather conditions: no heat loss due to movement of air
- ideal for use in outdoor areas (IP65: protected against water jets)
- robust housing made of plastic
- high power rating of 1,200 watts
- large heating area of up to 6 m²
- wide range of possible applications
- no emissions
- maintenance-free

The Lucciola halogen infrared radiant heater is a universal and rugged heater for outdoor use. Its special construction allows in combination with the pole/parasol bracket (#789) a flexible installation underneath parasols or at horizontal, vertical or diagonal poles. The optional pole/parasol bracket fits to diameters from approx. 20 mm to 45 mm.

The ruby red halogen infrared short-wave lamp with its high short-wave radiation component creates a pleasant ambiance without a high dazzling effect and has a lifespan of about 5,000 hours.

The ruggedized housing is made of black plastic and stainless steel. Optional stands (#2473 or #70010) are available. The Lucciola has 1,200 watts and comes with an on/off switch on the unit itself and is fitted with a 2.8 m rubber cable and mains plug.



Wall bracket included

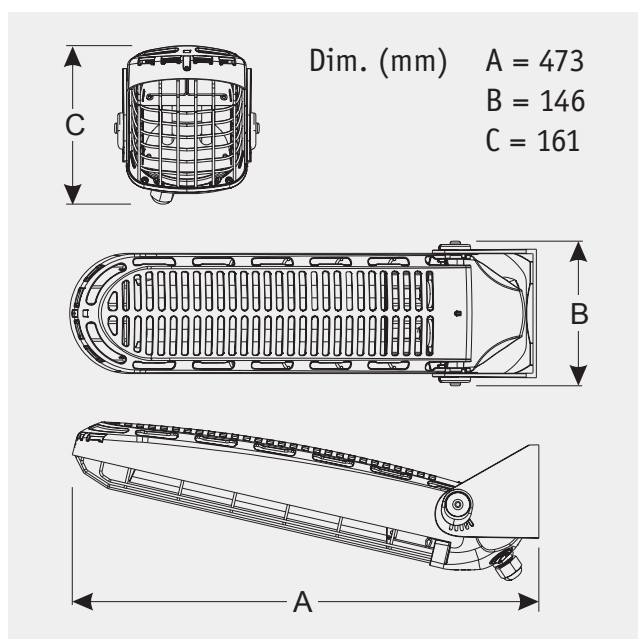


Lucciola 1200, #797 with optional pole/parasol bracket #789

Pole/parasol clamp #789
available as an optional
accessory



Accessories	Code No.
Pole/parasol clamp	789
Controller/Dimmer IP54 (2.3 kW)	98610
Controller/Dimmer IP54 (3.2 kW)	98625
Stand model Tripod	2473
Stand model Totem	702
Stand with base STA1	70010
Repl. lamp 1,200 W	3766
Smokers control/Timer	980001x



Heating area Lucciola 1200



Data	Lucciola 1200
Code No. (with cable/plug and switch)	797
Heating area (m ²)	6
Recommended min. distance to ceiling/parasol (m)	0.4
Lamp lifespan (hrs.)	approx. 5,000
Dimensions W x H x D (mm)	470 x 132 x 90
Weight (kg)	1.2
Power consumption (W)	1,200
Current consumption approx. (A)	5.4
Voltage / Frequency (V / Hz)	220-240 / ~50/60
Protection class / Safety class	IP65 / I
Colour	black
Material	Plastic / Aluminium





CASATHERM S3x1000

Features CasaTherm S3x1000

- latest halogen infrared technology
- high short-wave radiation component (IR-A)
- direct warmth without getting hot
- direct heating through infrared deep-heat
- unaffected by weather conditions: no heat loss due to movement of air
- ideal for use in outdoor areas (IP44: splashproof)
- robust design housing
- high power rating of 3 x 1,000 watts
- large heating area of up to 13.5 m²
- remote control for individual control included
- for parasols and stands
- no emissions
- maintenance-free

The CasaTherm S3x1000 halogen infrared radiant heater is characterised by its rugged design, flexible use on parasols and stands and low cost.

Its concept is to be used at a standard-fused single-phase electric socket. The compact dimensions allows the installation on any normal sun shade.

The ruby red halogen infrared short-wave lamp with its high short-wave proportion of radiation has a lifespan of about 5,000 hours.

A quick installation system allows a sideways fitting on rods with diameters up to 60 mm.

Every reflector unit can be tilted to an adjustable angle.

The CasaTherm S3x1000 has 3 units of a 1,000 watts heater and comes with a remote control, an on/off switch on the unit itself and is fitted with a 2.8 m rubber cable and mains plug.

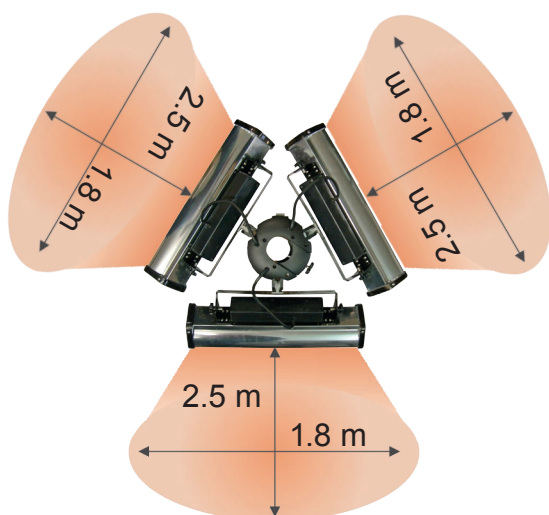
Accessories	Code No.
Stand with base STA1	70010
Repl. lamp ruby 1,000 W	71041



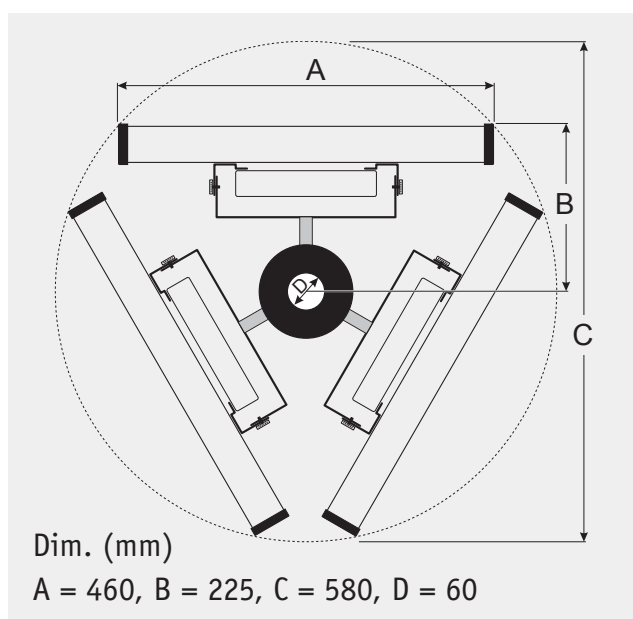
CasaTherm S3x1000 with optional accessory stand with base #71010 (2.5 m high)



Heating area CasaTherm S3x1000



approx. $3 \times 4.5 \text{ m}^2 = \text{approx. } 13.5 \text{ m}^2$



Data	CasaTherm S3x1000
Code No. (with cable/plug, remote control and switch)	71040
Heating area (m ²)	3 x 4.5
Recommended min. distance to ceiling/parasol (m)	0.4
Lamp lifespan (hrs.)	approx. 5,000
Dimensions W x H x D (mm)	510 x 510 x 220
Weight (kg)	5.9
Power consumption (W)	3 x 1,000
Current consumption approx. (A)	13.3
Voltage / Frequency (V / Hz)	220-240 / ~50/60
Protection class / Safety class	IP44 / I
Colour	silver / black
Material	Aluminium / Stainless steel / Plastic

PETALO 1200 / 1800



Features Petalo

- latest halogen infrared technology
- high short-wave radiation component (IR-A)
- direct warmth without getting hot
- direct heating through infrared deep-heat
- unaffected by weather conditions: no heat loss due to movement of air
- ideal for use in outdoor areas (IP55: protected against water jets)
- robust design housing made of stainless steel
- high power rating up to 1,800 watts
- large heating area of up to 9 m²
- wide range of possible applications
- no emissions
- maintenance-free

The Petalo halogen infrared radiant heater is characterised by its rugged and innovative design.

The housing is a combination of silver-coloured stainless steel and black weather resistant nylon fiberglass.

The ruby red halogen infrared short-wave lamp with its high short-wave proportion of radiation creates a pleasant ambience without a high dazzling effect and has a lifespan of about 5,000 hours.

The installation can be made as fixed installation on walls/ceilings (with optional bracket) or for flexible use on an optional stand.

Chains for suspension from ceilings are included. The Petalo has 1,200 or 1,800 watts with an on/off switch on the unit itself and a 2.8 m rubber cable and Schuko plug.

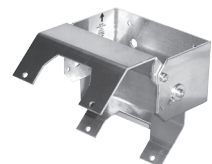


Petalo with optional accessory wall/tripod bracket #3205 and stand model Totem #702



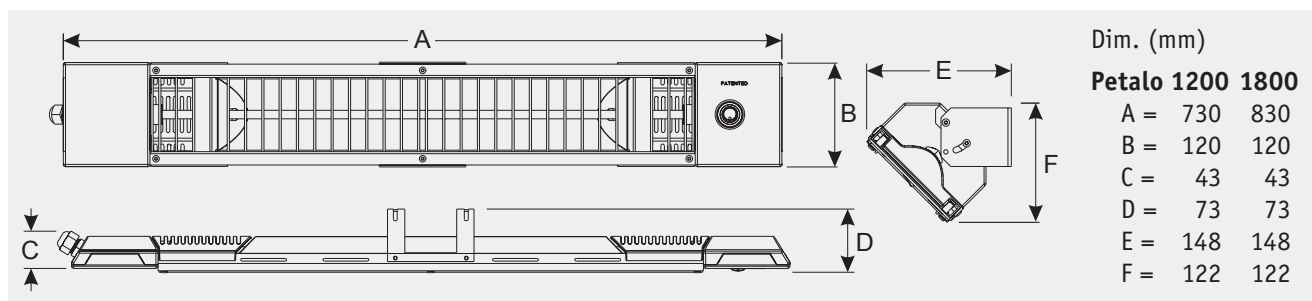
Chains for suspension from ceilings are included

The wall/tripod bracket #3205 made of aluminium is available as an optional accessory for Petalo

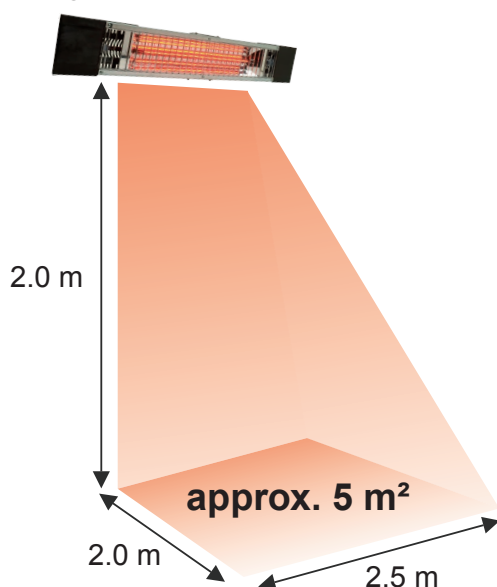


Accessories	Code No.
Wall/tripod bracket	3205
Controller/Dimmer IP54 (2.3 kW)	98610
Controller/Dimmer IP54 (3.2 kW)	98625
Stand model Totem	702

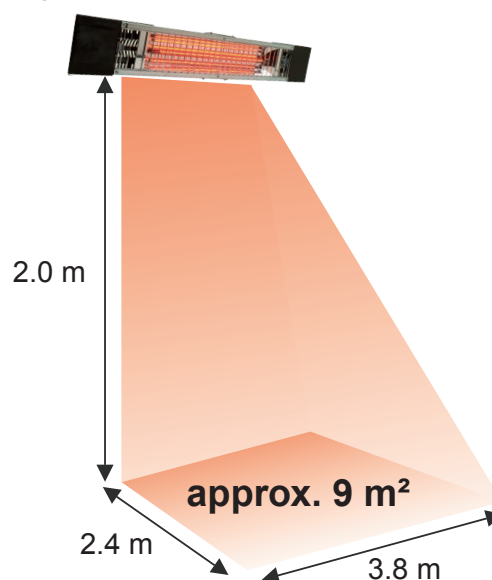
Accessories	Code No.
R/C dimmable IP54 (max. 2.0 kW)	71100
Repl. lamp ruby 1,200 W	3018
Repl. lamp ruby 1,800 W	3024
Smokers control/Timer	980001x



Heating area Petalo 1200



Heating area Petalo 1800

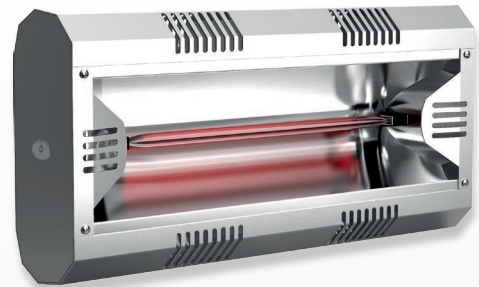


Data	Petalo 1200	Petalo 1800
Code No. (with cable/plug and switch)	722	728
Heating area (m ²)	5	9
Recommended min. distance to ceiling (m)	0.4	
Lamp lifespan (hrs.)	approx. 5,000	
Dimensions W x H x D (mm)	730 x 38 x 120	830 x 38 x 120
Weight (kg)	1.9	2.0
Power consumption (W)	1,200	1,800
Current consumption approx. (A)	5.4	8.0
Voltage / Frequency (V / Hz)	220-240 / ~50/60	
Protection class / Safety class	IP55 / I	
Colour	black / Stainless steel	
Material	Stainless steel / Plastic	

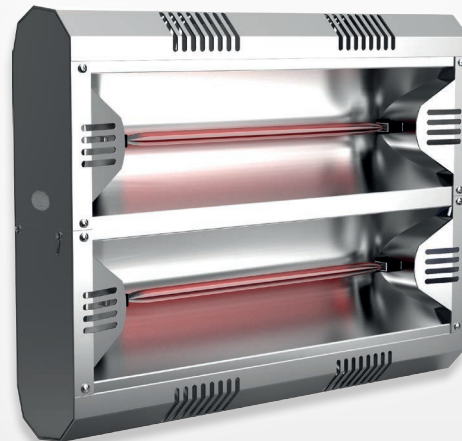
HATHOR IP65 LOWGLAREULTRA



Hathor IP65 4500 LowGlareUltra



Hathor IP65 1500 UltraLowGlareUltra

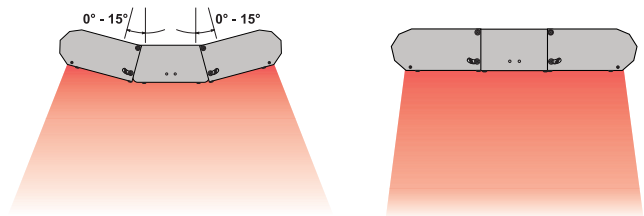


Hathor IP65 3000 LowGlareUltra

Features Hathor IP65

- latest halogen infrared technology with LowGlareUltra-Technik - up to 90% less dazzling light proportion
- high short-wave radiation component (IR-A)
- direct warmth without getting hot
- direct heating through infrared deep-heat
- independent of drafts: no heat loss through air movement
- Protection class IP65 - highest electrical safety despite rain and snow (IP65: protected against water jets)
- ideal for large commercial areas which can not be heated through warm air heating, eg incoming goods department, logistics areas etc
- robust housing made of aluminium
- high power rating of 1,500 up to 4,500 watts
- large heating area of up to 23 m²
- wide range of possible applications
- no emissions
- maintenance-free

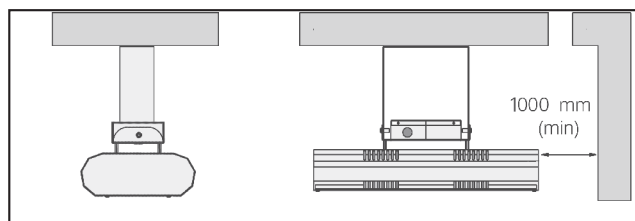
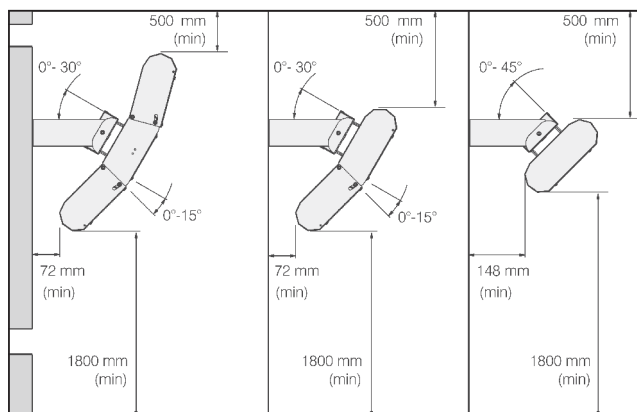
The Hathor infrared radiant heater is ideal for heating outdoor areas in the catering as well as indoor areas that are difficult or uneconomical to heat by conventional warm air heating.



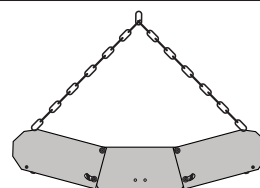
The adjustable focus of Hathor 3000 and 4500 optionally allows a smaller effective area with higher heat energy or a larger effective area with lower heat radiation

The housing is made of absolutely weather-resistant aluminum and has an integrated wall/ceiling bracket. The models Hathor IP65 3000 and 4500 have an adjustable focus, so that the effective area can be customized for wall and ceiling mounting to the needs. Installation can be done flexibly with the integrated wall/ceiling mount or with the on-site chain suspension.

There are models with 1,500, 3,000 or 4,500 watts power available. The electrical connection is single-phase 220-240 V ~ 50/60 Hz, model 4500 optionally also with three-phase 380-415 V/ ~ 50/60 Hz.



Numerous installation options
on ceilings and walls with
the integrated bracket or with
the on-site chains



Hathor IP65 1500 LowGlareUltra

Hathor IP65 3000 LowGlareUltra

Hathor IP65 4500 LowGlareUltra

Up to **90% less dazzling light**
LOW GLARE ULTRA

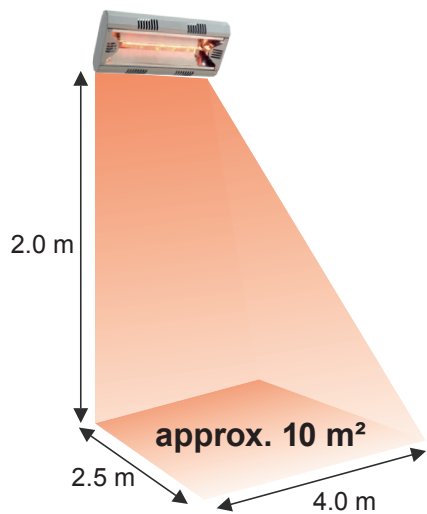
All Dim.
in mm

A2 = 496
A4 = 496
A6 = 496
B2 = 235
B4 = 375
B6 = 515
C = 313

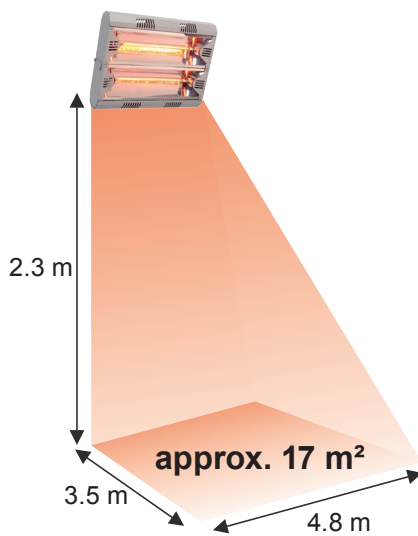
Data	Hathor IP 65 LowGlareUltra		
	1500	3000	4500
Code No.	794LGU	795LGU	796LGU
Heating area approx. (m²)	10	17	23
Lamp lifespan approx. (hrs.)	5,000		
Dimensions W x H x D (mm)	235 x 496 x 313	375 x 496 x 313	515 x 496 x 313
Weight (kg)	2.1	2.9	3.8
Power consumption (W)	1,500	3,000	4,500
Current consumption approx. (A)	6.6	13.2	20 (3 x 6.6)
Voltage / Frequency (V / Hz)	220-240 / ~50/60	220-240 / 380-415 ~50/60	
Protection class / Safety class	IP65 / I		
Colour	Aluminium silver		
Material	Aluminium		

Heating area Hathor IP65 LowGlareUltra

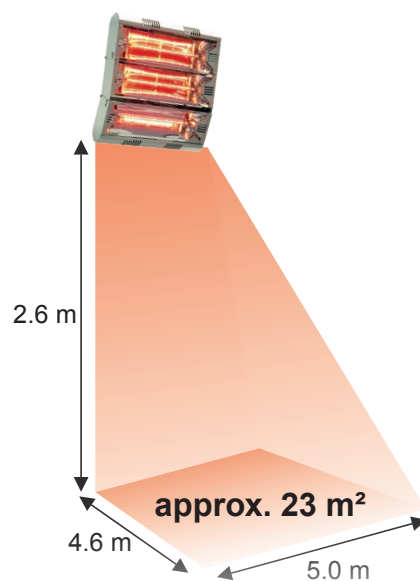
Hathor IP65 1500 LGU



Hathor IP65 3000 LGU

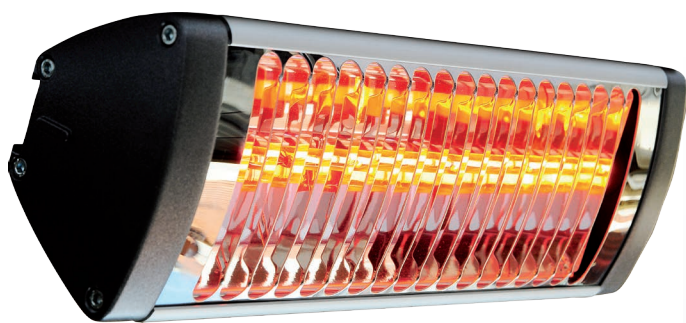


Hathor IP65 4500 LGU





THERMOLOGIKA SOLEIL PLUS



Thermologika Soleil Plus, #70065 with wall bracket (included)

Features Thermologika Soleil Plus

- latest HeLen infrared technology
- high short-wave radiation component (IR-A)
- direct warmth without getting hot
- direct heating through infrared deep-heat
- unaffected by weather conditions: no heat loss due to movement of air
- ideal for use in outdoor areas (IPX5: protected against water jets)
- robust, elegant design housing
- high power ratings with 1,500 watts
- large heating area up to 10 m²
- wall bracket included
- wide range of possible applications
- no emissions
- maintenance-free

The Thermologika Soleil Plus halogen infrared radiant heater is characterised by its rugged construction, very compact dimensions, stylish design and flexible use.

The gold-vaporized HeLen infrared lamp with its high short-wave proportion component has a lifespan of about 5,000 hours.

With the included wall bracket it can be mounted directly to the wall.

The Thermologika Soleil Plus has an 1,500 watts heater and comes with a wall bracket with adjustable tilt angle and is fitted with a 2.0 m rubber cable for fixed installation or for attachment of a plug.



The optional stand **Palologiko** can be fitted with up to 3 Thermologika Soleil Plus halogen infrared radiant heaters. The heaters can be mounted in horizontal or vertical position.

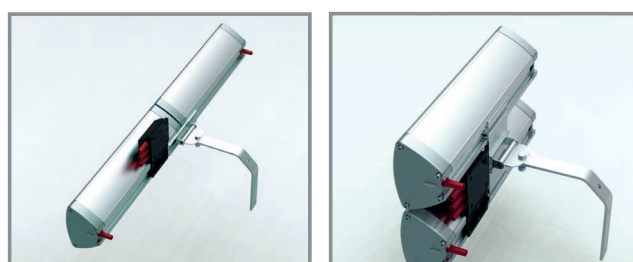
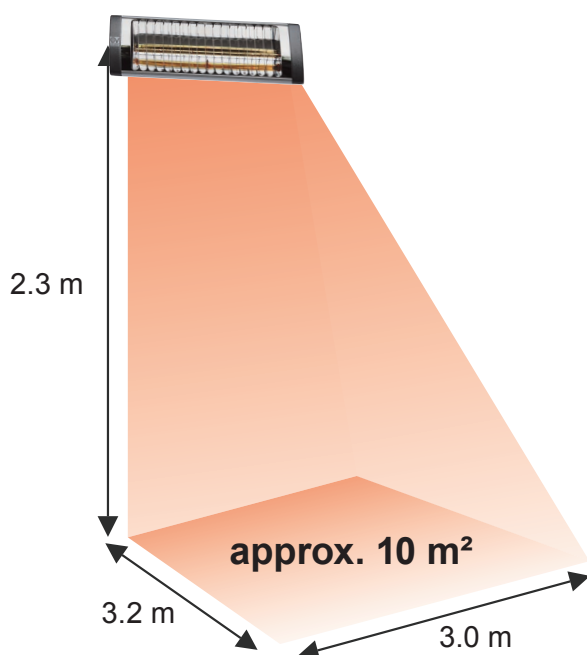
The power supply is optionally from below or from above. The Palologiko is made of galvanized, painted steel.

Fitted with 3 units of Thermologika Soleil Plus, the Palologiko with its 2.27 meters height offers a heating area of approx. 30 m²!

Accessories	Code No.
Stand model Palologiko	22499
Mounting kit for horizontal or vertical installation of 2 heaters	22970
Controller/Dimmer IP54 (2.3 kW)	98610
Controller/Dimmer IP54 (3.2 kW)	98625
R/C dimmable IP54 (max. 2.0 kW)	71100
Repl. lamp gold 1,500 W	700659
Smokers control/Timer	980001x



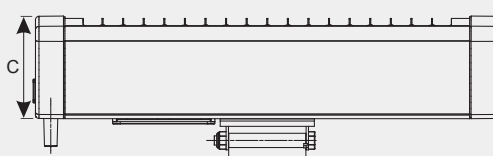
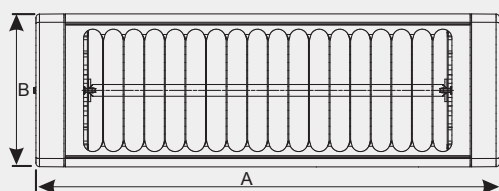
Heating area Thermologika Soleil Plus



With the optional mounting kit #22970 2 Thermologika Soleil Plus can be installed horizontal or vertical



Data	Thermologika Soleil Plus
Code No. (with cable)	70065
Heating area (m²)	10 m²
Recommended min. distance to ceiling/parasol (m)	0.3
Lamp lifespan (hrs.)	approx. 5,000
Dimensions W x H x D (mm)	395 x 130 x 120
Weight (kg)	1.9
Power consumption (W)	1,500
Current consumption approx. (A)	6.8
Voltage / Frequency (V / Hz)	220-240 / ~50/60
Protection class / Safety class	IPX5 / I
Colour	silver / black
Material	Aluminium / Stainless Steel

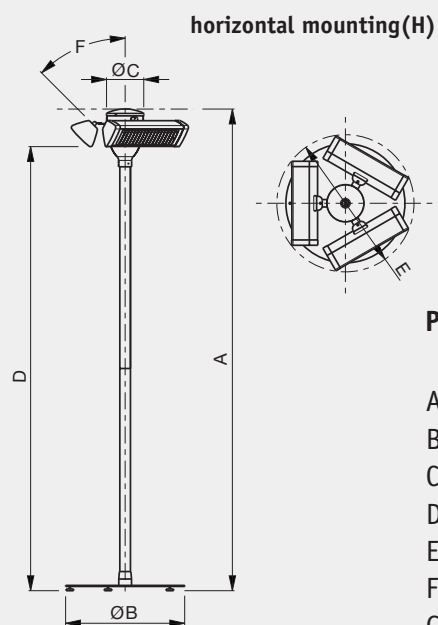
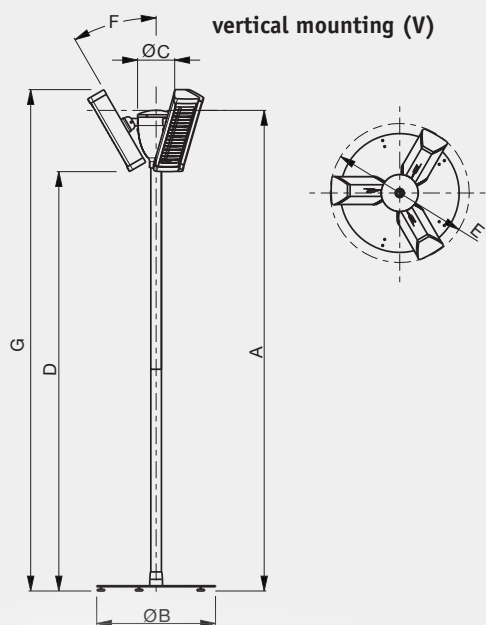


Dim. (mm)

A = 395

B = 130

C = 120

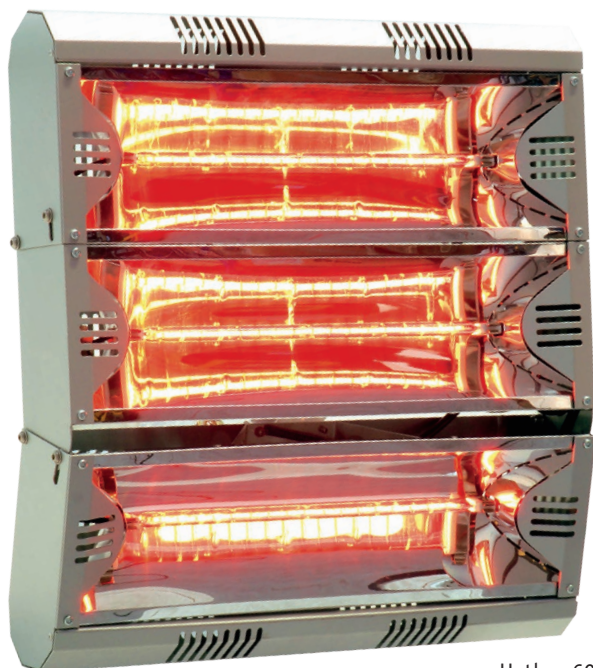


Palologiko

	V	H
A =	2270	-
B =	560	-
C =	175	-
D =	1970	2090
E =	655	645
F =	30°	45°
G =	2365	-



HATHOR 2000 / 4000 / 6000



Hathor 6000



Hathor 2000



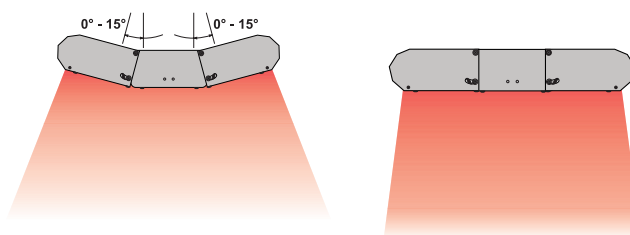
Hathor 4000

Features Hathor

- latest halogen infrared technology
- high short-wave radiation component (IR-A)
- direct warmth without getting hot
- direct heating through infrared deep-heat
- independent of drafts: no heat loss through air movement
- ideal for large commercial areas which can not be heated by warm air heating, eg incoming goods department, logistics areas etc
- robust housing made of Aluminium
- high power rating of 2,000 up to 6,000 watts
- large heating area of up to 23 m²
- wide range of possible applications
- no emissions
- maintenance-free

Hathor halogen infrared radiant heater is ideal for large commercial areas, which are naturally difficult and energy-intensive to heat by warm air heating, such as incoming goods department, logistics areas etc.

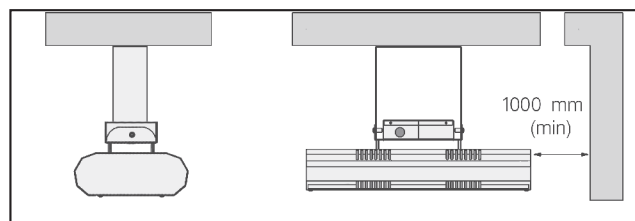
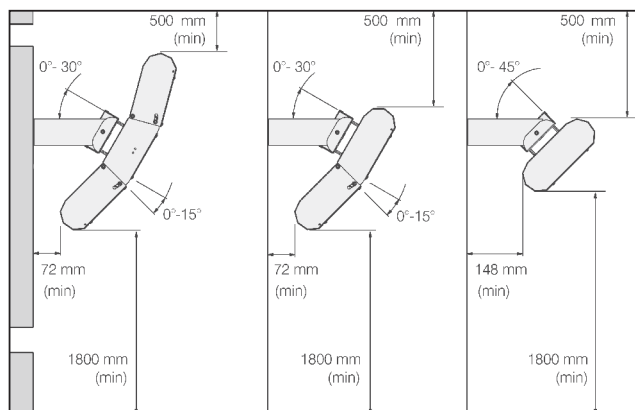
The housing is made of aluminium and includes an integrated wall/ceiling bracket.



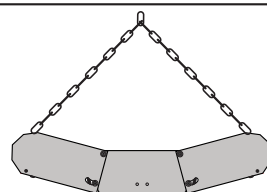
The adjustable focus of Hathor 4000 and 6000 allows alternatively a smaller effective area with higher warming or a larger effective area with less warming radiation.

The models Hathor IP65 4000 and 6000 have an adjustable focus, so that the effective area can be customized for wall and ceiling mounting to the needs. The gold-vaporized infrared halogen lamp with high short-wave radiation component has a lifespan of approx. 5,000 hours.

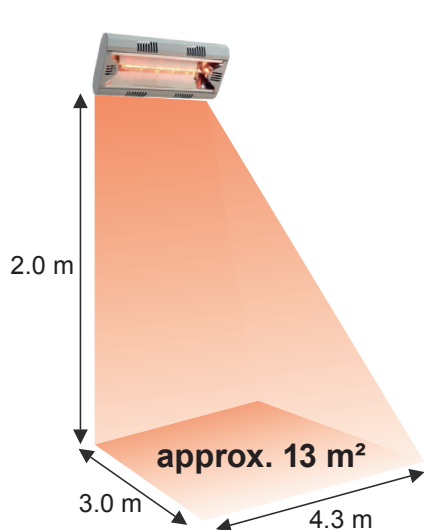
Installation can be done flexibly with the integrated wall/ceiling mount or with the on-site chain suspension. Hathor is available with power ratings of 2,000, 4,000 or 6,000 watts.



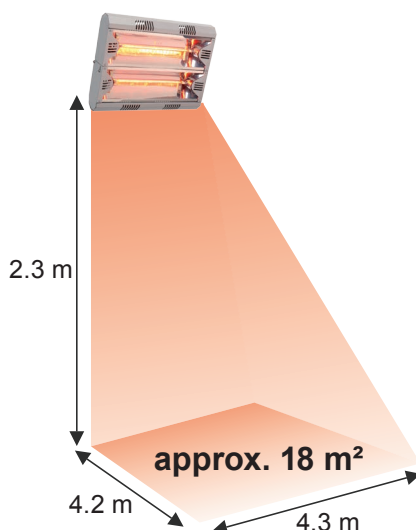
Various options of installation on ceilings or walls using the integrated fixture or the on-site chains



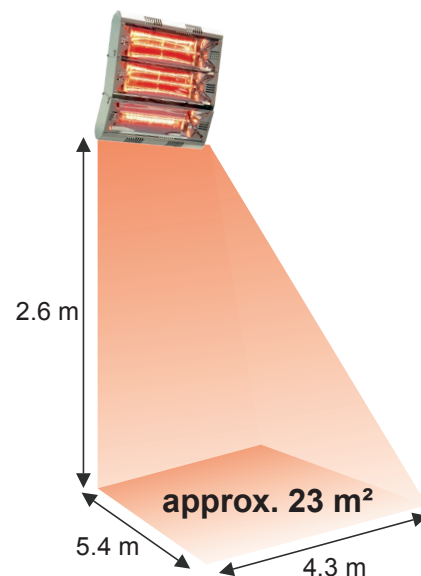
Heating area Hather 2000



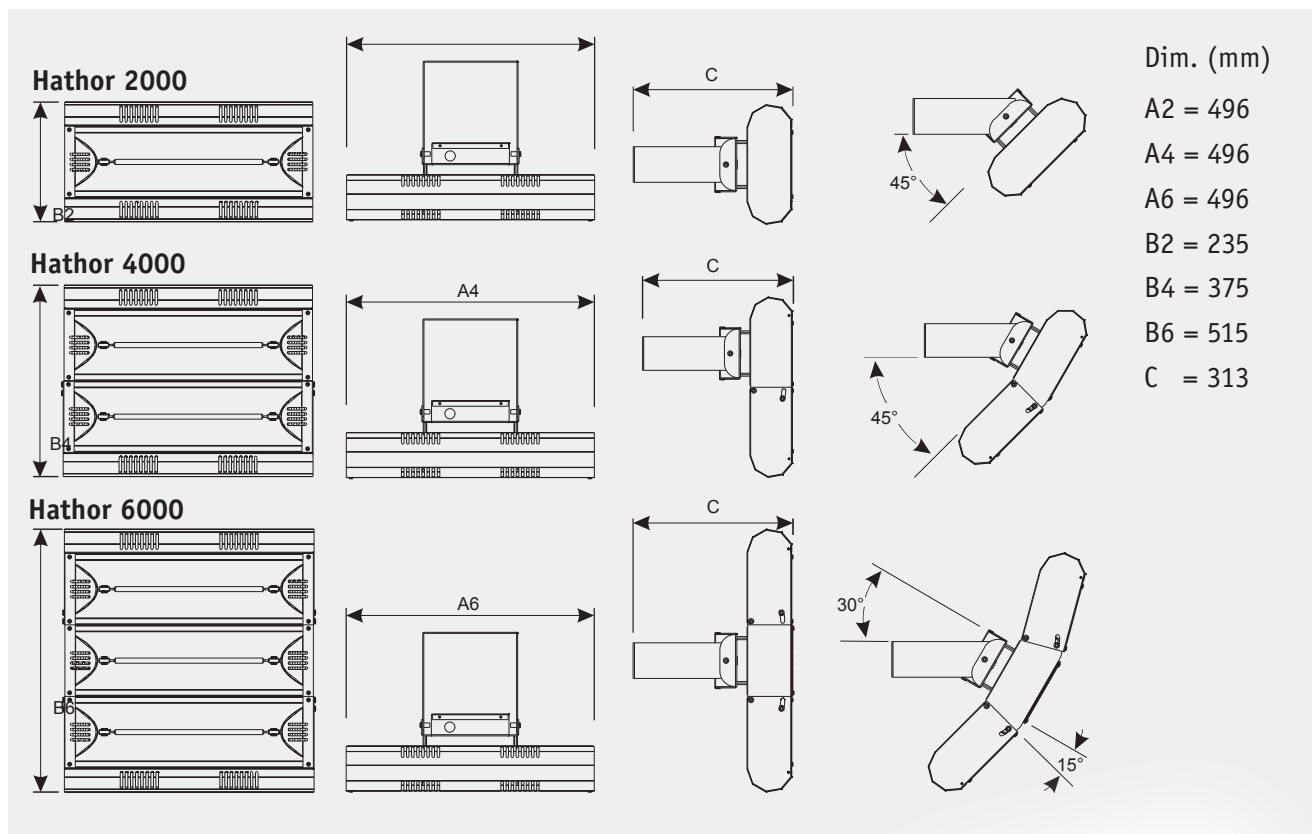
Heating area Hather 4000



Heating area Hather 6000



Data	Hathor 2000	Hathor 4000	Hathor 6000
Code No.	791	792	793
Heating area (m²)	13	18	23
Lamp lifespan (hrs.)	approx. 5,000		
Dimensions W x H x D (mm)	235 x 496 x 313	375 x 496 x 313	515 x 496 x 313
Weight (kg)	1.9	2.6	3.3
Power consumption (W)	2,000	4,000	6,000
Current consumption approx. (A)	9.0	18	27 (3 x 9)
Voltage / Frequency (V / Hz)	220-240 / ~50/60	220-240 / 380-415 ~50/60	
Protection class / Safety class	IP20 / I		
Colour	Aluminium silver		
Material	Aluminium		



FIORE TRIANGOLO 3600

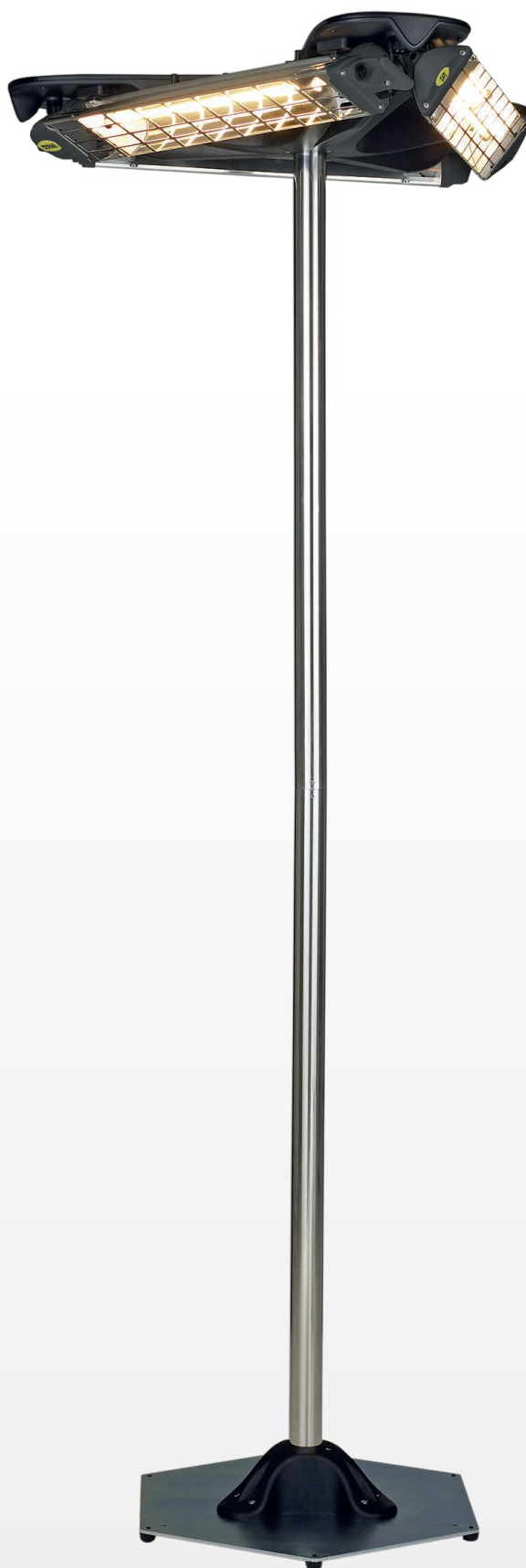


Features Fiore Triangolo 3600

- latest halogen infrared technology
- short-wave radiation component (IR-A)
- direct warmth without getting hot
- direct heating through infrared deep-heat
- unaffected by weather conditions: no heat loss due to movement of air
- ideal for use in outdoor areas (IP65: protected against water jets)
- robust design housing, stable base
- high power rating up to 3 x 1,200 watts
- large heating area of up to 3 x 5 m²
- wide range of possible applications
- no emissions
- maintenance-free

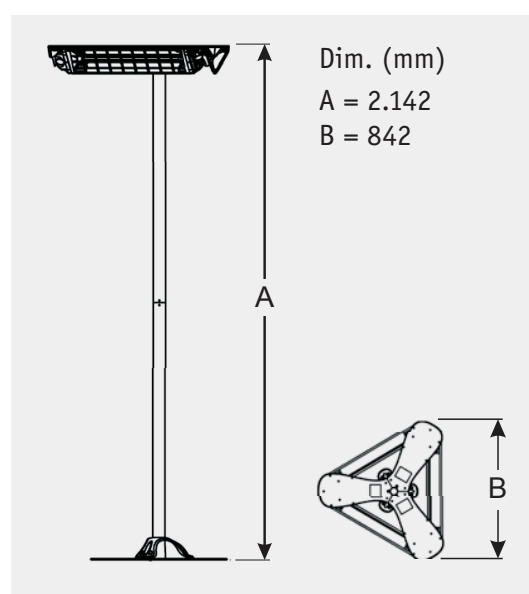
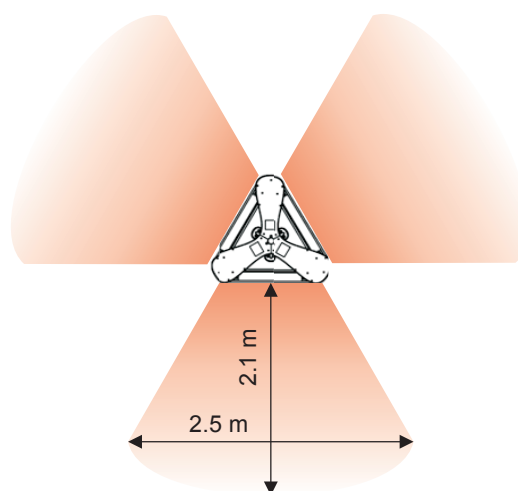
The Fiore Triangle consists of 3 x 1200 Fiore which are mounted in a bracket and can be adjusted and controlled individually.

The floor model with its stable base and a height of 2.2 m is ideal for use in catering. To enable universal use the cable feed comes from below or from the top of the unit and can be connected to a 230V supply using a safety plug or 400V supply outlet. The weatherproof combination of steel, stainless steel, aluminum and plastic makes the unit extremely robust. The ceiling model is ideal for fixed locations in outdoor seatings, terraces or balconies.





Heating area Fiore Triangolo 3600



Accessories	Code No.
Repl. lamp sunny yellow 1,200 W	2450
Smokers control/Timer	980001x

Data	Fiore Triangolo 3600	
	Stand	Ceiling
Code No. (with cable/plug and switch)	769N	769NS
Heating area (m ²)	15	15
Recommended min. distance to ceiling (m)	0.3	
Lamp lifespan (hrs.)	approx. 5,000	
Dimensions W x H x D (mm)	842 x 842 x 2142	842 x 842 x 493
Weight (kg)	16.9	6.2
Power consumption (W)	3,600	
Current consumption approx. (A)	16	
Voltage / Frequency (V / Hz)	220-240 / 380-415 / ~50/60	
Protection class / Safety class	IP55 / I	
Colour	silver / grey / black	
Material	Stainless steel / Aluminium / Plastic	

STILUOVO 3600

Features Stiluovo

- unique, remarkable design
- latest halogen infrared technology
- short-wave radiation component (IR-A)
- direct warmth without getting hot
- direct heating through infrared deep-heat
- unaffected by weather conditions:
no heat loss due to movement of air
- ideal for use in outdoor areas
(IP65: protected against water jets)
- robust, stable design housing
- high power rating up to 3 x 1,200 watts
- large heating area of up to 18 m²
- wide range of possible applications
- no emissions
- maintenance-free

The Stiluovo consists of 3 x Lucciola 1200, which are housed in a cover as individually adjustable and individually switchable elements.

When the unit is switched on the weatherproof cover opens as if by magic by means of a pneumatic pump. Once the cover is fully deployed the selected radiant heaters are switched on. Drinks and snacks can be placed on the base portion and a shelf on the central column.

The Stiluovo is ideal for mobile use in upmarket hotels and restaurants. To enable universal use the cable feed comes from below the unit and can be connected to a 230V supply using a safety plug or 400V supply outlet.

During operation and after switching the unit off thermal monitoring and built-in fans ensure that the cover only closes once the temperature has dropped sufficiently.

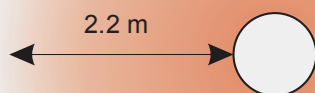
The weatherproof combination of steel, stainless steel, aluminium and plastic makes the unit extremely robust. Stable, lockable rollers facilitate mobile use.





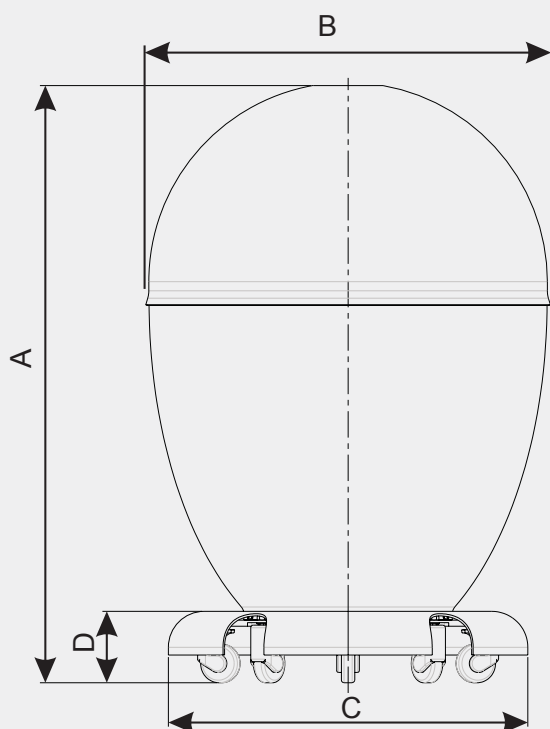
Data	Stiluovo 3600
	Colour anthracite
Code No. (with cable/plug and switch)	771
Heating area (m²)	16
Lamp lifespan (hrs.)	approx. 5,000
Dim. Ø x H closed/opened (mm)	Ø 788 x 1261/2552
Weight (kg)	77
Power consumption (W)	3,600
Current consumption approx. (A)	18
Voltage / Frequency (V / Hz)	220-240 oder 400 V/ ~50/60
Protection class / Safety class	IP65 / I
Material	Stainless Steel / Aluminium / ABS

Heating area Stiluovo 3600

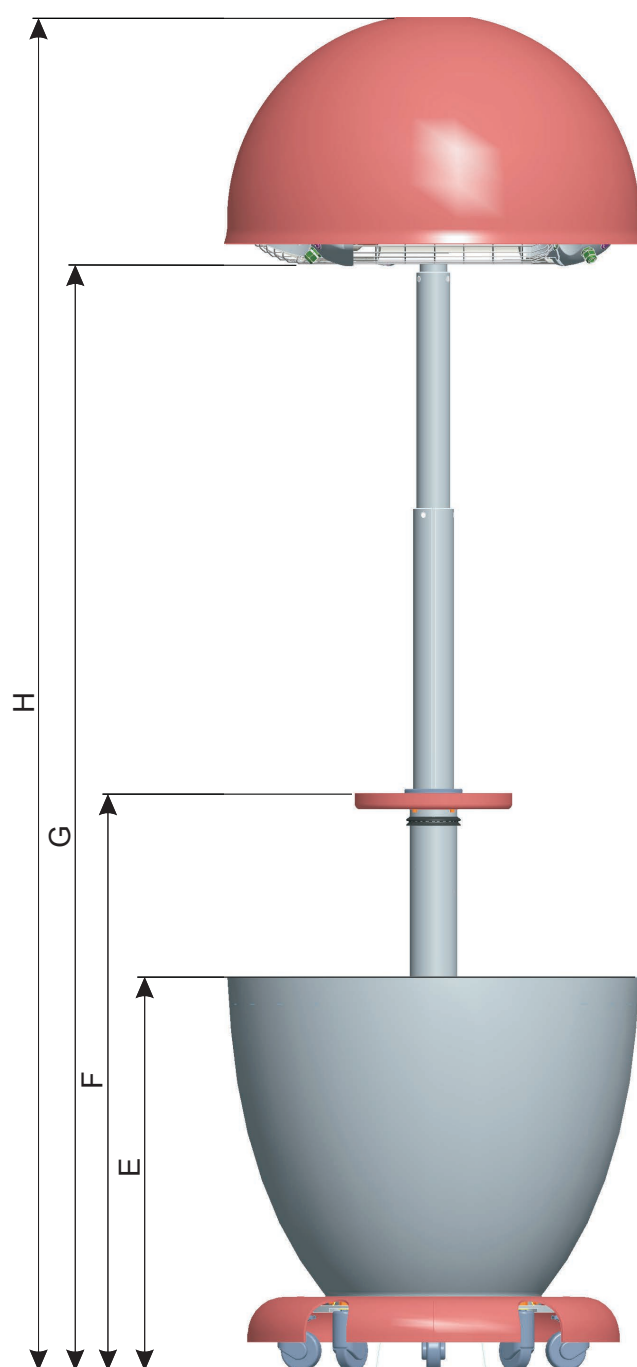


Dim. (mm)

A = 1163	E = 743
B = 788	F = 1088
C = 700	G = 2086
D = 139	H = 2552



Accessories	Code No.
Repl. lamp ruby 1,200 W	3766





	ACCESSORIES ASSIGNMENT		Code No.	CasaTherm Heatpanel 1500	CasaTherm Heatpanel 1800	CasaTherm Heatpanel 2400	CasaTherm Heatpanel 3200	CasaTherm W1500 Gold LowGlare, white	CasaTherm W1500 Gold LowGlare, alu	CasaTherm W2000 Gold LowGlare, white	CasaTherm W2000 Gold LowGlare, alu	CasaTherm W2000 FB Gold LowGlare, white	CasaTherm W2000 FB Gold LowGlare, alu	CasaTherm Slimdesign 1500 Gold	CasaTherm S1800 Gold	CasaTherm S3x1000	Fiore 1200
	Models																
MOUNTING ACCESSORIES	Pipe/stand bracket	768PN															X
	Cable suspension	705															
	Wall/stand bracket	3205															
	Wall bracket	768MN															X
	Double mounting kit	7701	X	X	X	X											
	Serial mounting kit	7702	X	X	X	X											
	Accessory for double mounting	22970															
	Wall/ceiling spacer	7703	X	X	X	X											
	Pipe/parasol bracket	789															
	Pivotable wall bracket	71014													X		
	Parasol clamp SSK1	71011													X		
	KAH chain suspension with carabiner	70043					X	X	X	X	X	X	X				
	Clamp for pipes/stands RK1	71015													X		
	Universal clamp for pipes UK1	70041					X	X	X	X	X	X	X				
	Universal clamp for pipes UK2	70045					X	X	X	X	X	X	X		X		
STANDS	Stand with base STA1	70010					X	X	X	X	X	X	X		X	X	X
	Stand model Palologika	22499															
	Stand model Tripod	2473															X
	Stand model Totem	702												X			
CONTROLLER	Controller/Dimmer IP54 (2.3 kW)	98610	X	X			X	X	X	X				X			X
	Controller/Dimmer (4x2.0 kW)	724	X	X			X	X	X	X				X			X
	Controller/Dimmer IP54 (3.2 kW)	98625	X	X	X	X	X	X	X	X				X			X
	FB-FHD 2,0 R/C dimmable, 4 steps	71100	X	X			X	X	X	X				X			X
	VZ400 Smokers control, only circuit	9800010					X	X	X	X				X			X
	VZ400 IP54 with housing and button	9800011					X	X	X	X				X			X
	VZ400 IP54 with housing/button/key	9800012					X	X	X	X				X			X
REPLACEMENT LAMPS	Repl. lamp Gold LowGlare 1,500 W	70042					X	X									
	Repl. lamp Gold LowGlare 2,000 W	70044							X	X	X	X					
	Repl. lamp 1,500 W gold	3026												X			
	Repl. lamp 1,800 W gold	71020													X		
	Repl. lamp 1.000 W ruby	71041														X	
	Repl. lamp 1,200 W sonnegelb	2450															X
	Repl. lamp 1,800 W sunny yellow	2781															
	Repl. lamp 2,000 W Hathor	3229															
	Repl. lamp 1,500 W LowGlareUltra	4365															
	Repl. lamp 1,200 W ruby	3018															
	Repl. lamp 1,800 W ruby	3024															
	Repl. lamp 1,500 W gold Soleil	700659															
	Repl. lamp 1,200 W ruby U-shape	3766															



ACCESSORIES ASSIGNMENT																			
Models	Code No.	Fiore 1200 (P)	Fiore 1800	Fiore 1800 (P)	Fiore Triangolo Ceiling	Fiore Triangolo Stand	Hathor 2000	Hathor 4000	Hathor 6000	Hathor IP65 LowGlareUltra 1500	Hathor IP65 LowGlareUltra 3000	Hathor IP65 LowGlareUltra 4500	Petalo 1200	Petalo 1800	Sharklite 1200	Sharklite 1800	Thermologika Soleil Plus	Lucciola	
Pipe/stand bracket	768PN	X	X	X															
Cable suspension	705														X	X			
Wall/stand bracket	3205												X	X					
Wall bracket	768MN	X	X	X															
Double mounting kit	7701																		
Serial mounting kit	7702																		
Accessory for double mounting	22970																X		
Wall/ceiling spacer	7703																		
Pipe/parasol bracket	789																	X	
Pivotable wall bracket	71014																		
Parasol clamp SSK1	71011																		
KAH chain suspension with carabiner	70043																		
Clamp for pipes/stands RK1	71015																		
Universal clamp for pipes UK1	70041																		
Universal clamp for pipes UK2	70045																		
Stand with base STA1	70010	X	X	X														X	
Stand model Palologika	22499																X		
Stand model Tripod	2473	X	X	X														X	
Stand model Totem	702						X	X	X	X	X	X	X	X	X	X		X	
Controller/Dimmer IP54 (2.3 kW)	98610	X					X			X			X	X	X	X	X	X	
Controller/Dimmer (4x2.0 kW)	724	X					X			X			X	X	X	X	X	X	
Controller/Dimmer IP54 (3,2 kW)	98625	X					X			X			X	X	X	X	X	X	
FB-FHD 2,0 R/C dimmable, 4 steps	71100	X					X			X			X	X	X	X	X	X	
VZ400 Smokers control, only circuit	9800010	X	X	X	X	X	X	X		X	X		X	X	X	X	X	X	
VZ400 IP54 with housing and button	9800011	X	X	X	X	X	X	X		X	X		X	X	X	X	X	X	
VZ400 IP54 with housing/button/key	9800012	X	X	X	X	X	X	X		X	X		X	X	X	X	X	X	
Repl. lamp Gold LowGlare 1,500 W	70042																		
Repl. lamp Gold LowGlare 2,000 W	70044																		
Repl. lamp 1,500 W gold	3026																		
Repl. lamp 1,800 W gold	71020																		
Repl. lamp 1.000 W ruby	71041																		
Repl. lamp 1,200 W sunny yellow	2450	X			X	X													
Repl. lamp 1,800 W sunny yellow	2781		X	X															
Repl. lamp 2,000 W Hathor	3229						X	X	X										
Repl. lamp 1,500 W LowGlareUltra	4365									X	X	X							
Repl. lamp 1,200 W ruby	3018												X		X				
Repl. lamp 1,800 W ruby	3024													X		X			
Repl. lamp 1,500 W gold Soleil	700659																X		
Repl. lamp 1,200 W ruby U-shape	3766																	X	

Product	Code No.	Description	Power kW	Protection class	RRP net €
	7715	CasaTherm Heatpanel BlackLight 1500 with 3 m rubber cable, with wall bracket	1.5	IP55	301.68
	7718	CasaTherm Heatpanel BlackLight 1800 with 3 m rubber cable, with wall bracket	1.8	IP55	335.29
	7724	CasaTherm Heatpanel BlackLight 2400 with 3 m rubber cable, with wall bracket	2.4	IP55	360.50
	7732	CasaTherm BlackLight 3200 with 3 m rubber cable, with wall bracket	3.2	IP55	394.12
	7701	Double mounting kit CasaTherm BlackLight	-	-	57.98
	7702	Serial mounting kit CasaTherm BlackLight	-	-	32.77
	7703	Ceiling spacer CasaTherm BlackLight	-	-	29.41
    UK1  UK2	70027	CasaTherm W1500 Gold LowGlare white 5 m rubber cable, Schuko plug, wall bracket	1.5	IP65	200.84
	70028	CasaTherm W1500 Gold LowGlare alu 5 m rubber cable, Schuko plug, wall bracket	1.5	IP65	200.84
	70025	CasaTherm W2000 Gold LowGlare white 5 m rubber cable, Schuko plug, wall bracket	2.0	IP65	226.05
	70026	CasaTherm W2000 Gold LowGlare alu 5 m rubber cable, Schuko plug, wall bracket	2.0	IP65	226.05
	70031	CasaTherm W2000 FB Gold LowGlare white 5 m rubber cable, Schuko plug, wall bracket, R/C	2.0	IP65	251.26
	70030	CasaTherm W2000 FB Gold LowGlare alu 5 m rubber cable, Schuko plug, wall bracket, R/C	2.0	IP65	251.26
	70041	Universal clamp UK1 for pipes, with velcro for CasaTherm W	-	-	10.08
	70045	Universal clamp UK2 for pipes, Alu, for CasaTherm W and CasaTherm S	-	-	25.13
	70043	KAH chain suspension for CasaTherm W	-	-	8.32
	70728	CasaTherm 1500 Slimdesign Gold with switch, 2.8 m rubber cable, Schuko plug, chains and wall/tripod bracket	1.5	IP55	167.23
	71001	CasaTherm S1800 Gold with R/C, 2.8 m, rubber cable, Schuko plug, wall bracket	1.8	IP55	125.21
	71014	WDHS wall bracket pivotable	-	-	20.92
	71015	RK 1, pipe clamp for horizontal mounting, for pipes up to Ø 48mm	-	-	5.80
	71011	SSK1, parasol clamp	-	-	12.52
 	766N	Fiore 1200, with switch, 2.8 m rubber cable, Schuko plug and chain suspension	1.2	IP65	125.21
	767N	Fiore1800, with switch, 2.8 m rubber cable, Schuko plug and chain suspension	1.8	IP65	133.61
	766NP	Fiore 1200P, without cable, for fixed installation	1.2	IP65	121.01
	767NP	Fiore 1800P, without cable, for fixed installation	1.8	IP65	129.41
 	768MN	Wall bracket Fiore	-	-	13.36
	768PN	Stand/pipe bracket Fiore	-	-	25.13

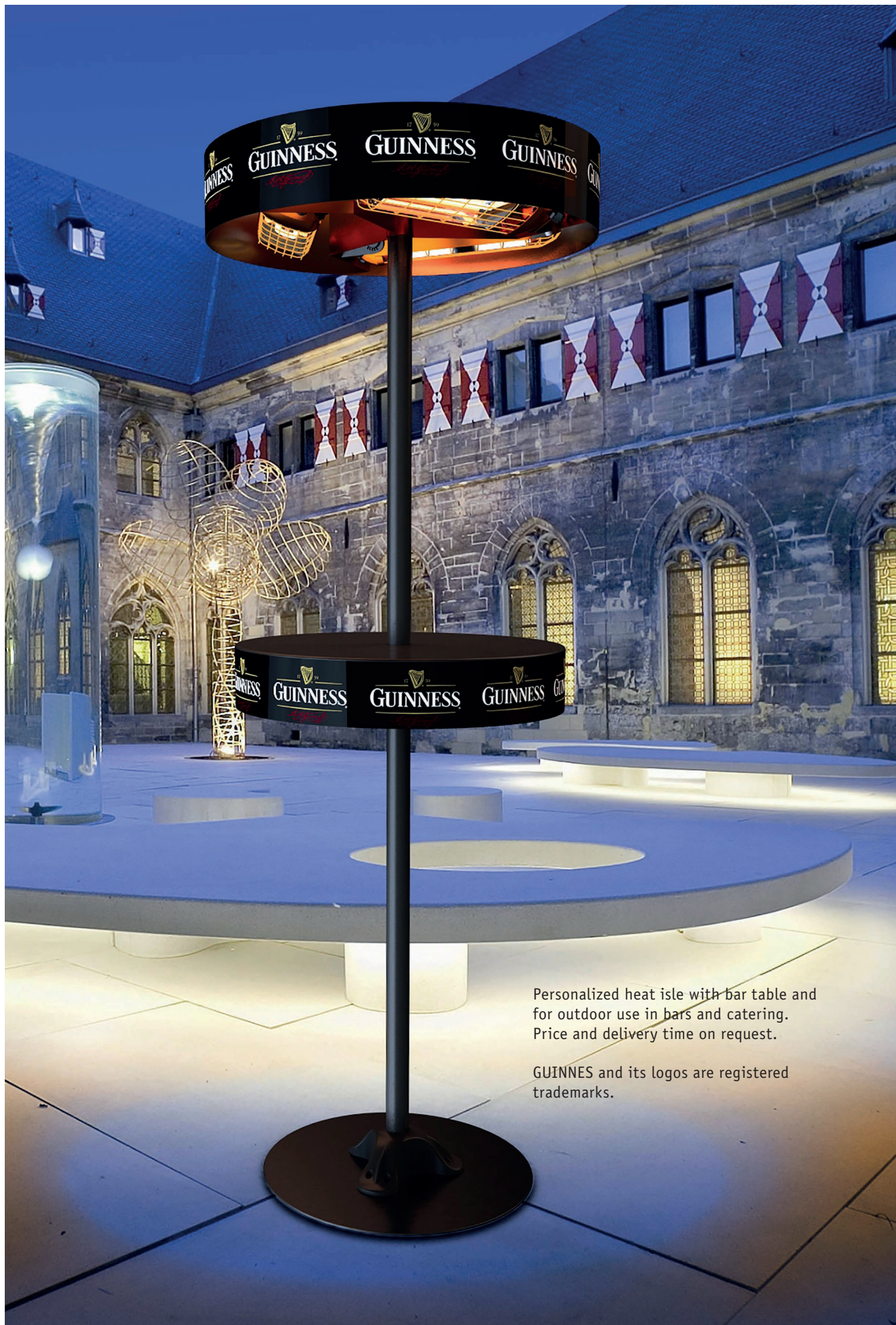
Prices valid from 1st of March 2014. With publication of this price list all previous price lists lose their validity. Misprints, errors and technical changes that serve the interest of product improvement without prior notice excepted.

Product	Code No.	Description	Power kW	Protection class	RRP net €
	712N	Sharklite 1200 with switch, 2.8 m rubber cable, Schuko plug and wall bracket	1.2	IP65	188.24
	718N	Sharklite 1200 with switch, 2.8 m rubber cable, Schuko plug and wall bracket	1.8	IP65	200.84
	705	Cable suspension Sharklite	-	-	41.18
	797	Lucciola 1200 with switch, 2.8 m rubber cable, Schuko plug and wall bracket	1.2	IP65	142.02
	789	Pipe/parasol clamp Lucciola	-	-	20.92
	71040	CasaTherm S 3x1000 with a 2.8 m rubber cable, Schuko plug and remote control	3.0	IP44	234.45
	722	Petalò 1200 with switch, 2.8 m rubber cable, Schuko plug and chain suspension	1.2	IP55	188.24
	728	Petalò 1800 with switch, 2.8 m rubber cable, Schuko plug and chain suspension	1.8	IP55	200.84
	3205	Wall/stand bracket Petalò	-	-	25.13
	794LGU	Hathor IP65 1500 LowGlareUltra without cable, for fixed installation, wall/ceiling bracket incl.	1.5	IP65	284.87
	795LGU	Hathor IP65 3000 LowGlareUltra without cable, for fixed installation, wall/ceiling bracket incl., focus adjustable	3.0	IP65	394.12
	796LGU	Hathor IP65 4500 LowGlareUltra without cable, for fixed installation, wall/ceiling bracket incl., focus adjustable	4.5	IP65	503.36
	70065	Thermologika Soleil Plus 1500 with 2.0 m rubber cable and wall bracket	1.5	IPX5	251.26
	22970	Double mounting kit for horizontal/vertical installation of 2 Thermologika Soleil Plus	-	-	45.38
	791	Hathor 2000 , without cable, for fixed installation, wall/ceiling bracket incl.	2.0	IP20	226.05
	792	Hathor 4000 , without cable, for fixed installation, wall/ceiling bracket incl., focus adjustable	4.0	IP20	326.89
	793	Hathor 6000 , without cable, for fixed installation, wall/ceiling bracket incl., focus adjustable	6.0	IP20	419.33
	769N	Fiore Triangolo 3600 , prof. stand unit, 2.14 m high, with 5 m cable, with switch and plug, separately adjustable	3.6	IP55	671.43
	769NS	Fiore Triangolo 3600 , prof. ceiling unit, with switch, for fixed installation, separately adjustable	3.6	IP55	528.57
	771	Stiluovo 3600 , mobile infrared heating island, pneumatic opening, 3 x 1200 W, heater separately adjustable, colour anthracite	3.6	IP65	1,679.83

Prices valid from 1st of March 2014. With publication of this price list all previous price lists lose their validity. Misprints, errors and technical changes that serve the interest of product improvement without prior notice excepted.

Product	Code No.	Description	Power kW	Protection class	RRP net €
Accessories Stands/Tripods					
	70010	CasaTherm STA1 stand with base, pipe stainless steel, Ø 44 mm, base, 2.5 m highh, for CasaTherm S1800, W1500/2000, 1500 Slimdesign, S3x1000, Fiore, Lucciola			49.58
	2473	TRIPOD , adjustable in height from 1.12 m up to 2.20 m, suitable for Fiore and Lucciola			49.58
	702	TOTEM , design stand, 2.09 m high, suitable for Sharklite, Petalo, Hathor and CasaTherm Slimdesign			167.23
	22499	Palologiko , professional stand for Thermologika Soleil Plus, 2.36 m high, up to 3 heaters mounted horizontally or vertically, delivery without heaters			335.29
Accessories Controller					
 <p>WS10/WS14/WS2x9</p> <p>FB-FHD 2.0</p> <p>VZ400A</p>	98610	WS10 continuously dimmer, max. 2.3 kW, on-wall housing, IP54	2.3	IP54	133.61
	98625	WS14 continuously dimmer, max. 3,2 kW, on-wall housing, IP54	3.2	IP54	242.86
	71100	FB-FHD r/c dimmable IP54, max. 2.0 kW, hand transmitter + receiver, 4 steps dimming	2.0	IP54	209.24
	98628	WS2x9 , stufenloser 2-channel dimmer, max. 2 x 2.0 kW, on-wall housing, IP54	2 x 2.0	-	377.31
	9800012	VZ400A Gastro-Smokers control/Timer, 3 - 20 min. adjustable, housing with push button and key switch, IP54	3.7	IP54	209.24
	9800011	VZ400B Smokers control/Timer, 3 - 20 min. adjustable, housing with push button, IP54	3.7	IP54	150.42
	9800010	VZ400C Smokers control/Timer, 3 - 20 min. adjustable, only circuit board	3.7	-	74.79
Lamps					
	70042	Lamp CasaTherm W Gold LowGlare 1,500 W	1.5	-	57.98
	70044	Lamp CasaTherm W Gold LowGlare 2,000 W	2.0	-	66.39
	3026	Lamp CasaTherm Slimdesign Gold 1,500 W	1.5	-	66.39
	71020	Lamp CasaTherm S1800 Gold 1,800 W	1.8	-	41.18
	71041	Lamp CasaTherm S3x1000, 1.000 W, rot	1.0	-	20.92
	2450	Lamp Fiore1,200 W, sunny yellow	1.2	-	25.13
	2781	Lamp Fiore 1,800 W, sunny yellow	1.8	-	33.53
	3229	Lamp Hathor Gold 2,000 W	2.0	-	49.58
	4365	Lamp HathorIP Gold LowGlareUltra 1,500 W	1.5	-	91.60
	3018	Lamp Sharklite/Petalo 1,200 W, ruby	1.2	-	33.53
	3024	Lamp Sharklite/Petalo 1,800 W, ruby	1.8	-	38.57
	700659	Lamp Thermologika Soleil Gold 1,500 W	1.5	-	116.80
	3766	Lamp Lucciola 1,200 W, ruby	1.2	-	33.53

Prices valid from 1st of March 2014. With publication of this price list all previous price lists lose their validity. Misprints, errors and technical changes that serve the interest of product improvement without prior notice excepted.



Personalized heat isle with bar table and
for outdoor use in bars and catering.
Price and delivery time on request.

GUINNESS and its logos are registered
trademarks.

APPLICATIONS

Suitable for many applications

With such a wide variety of models, our halogen infrared radiant heaters are suitable for many applications.

Wherever there is a need for precisely directed instant heat without fumes or smell, and with no oxygen consumption inside or out of doors, halogen infrared radiant heaters are the perfect answer.

Their weather resistance, high efficiency, long range heat output and low acquisition costs (that are quickly amortized) make halogen infrared radiant heaters ideal...



... for comfortable smoking areas in hotels, eating places and public buildings ...



... for outdoor terraces in restaurants and bars ...



... for private terraces and outdoor seating areas ...



... for warehouses and logistics areas ...



... or for churches which are otherwise difficult to heat.

HALOGEN INFRARED RADIANT HEATERS

Advantages of halogen infrared heaters compared with gas radiant heaters and other methods of heating



- **Universal mounting and positioning** - Infrared heaters can be easily assembled and fixed to walls, ceilings, poles, parasols, or used as mobile units on stands, as needed.
- **Multiple control options** - by remote controls, motion sensors, timers and dimmers.
- **Safety** - no safety risks arising from defective gas cylinders or connections.
- **No direct emissions** - burning gases such as propane release lethal carbon monoxide (CO) as well as environmentally harmful carbon dioxide (CO₂). Operation in enclosed spaces is not permitted.
- **Low running costs** - about 45% lower than comparable gas heaters.
- **High efficiency** - over 90% of the energy used is converted into heat.
- **Direct heating of bodies** - halogen infrared radiant heaters with short wave content barely warm the surrounding air. When the energy falls on objects or bodies up to about 90% of it is converted into heat. Gas heaters heat in all directions indiscriminately and mainly warm the surrounding air.
- **No heat loss** - because bodies are heated directly, the heat is unaffected by air movements. Devices using conventional heating methods do so mainly by warming the air; most of this heat is lost out of doors.
- **Instant heat** - no extensive warm-up period. The heating effect appears within 1- 2 seconds of switching on.
- **No maintenance** - infrared radiant heaters are maintenance-free. All that is needed is to change the lamps (approximately every 5,000 hours, depending on the model).
- **No need to change gas cylinders** - no breakdowns because of empty gas cylinders and no cumbersome cartridge replacement is required. Infrared radiant heaters are powered by electricity and are always ready for use.
- **No need for legal compliance with gas cylinder storage requirements** - the requirements of TRG 280 regarding facilities for compressed gas containers in storage that are fire retardant, ventilated and protected against explosions must be adhered to.
- **No special equipment is needed** - in accordance with the German Accident Prevention Regulation BGV D34, when radiant gas heaters are used for commercial purposes, a safety pressure regulator with pressure relief valves and hose rupture protection conforming to DIN 30 693 must be used.



Subject to change without prior notice.

© CasaFan 2014