

# Clean Air *Optima*®

## Airwasher

2in1: Air purifying &  
Air humidifying

User's Manual **CA-803**



Product Specification

Product Name	Clean Air Optima CA-803
Rated Voltage and Frequency	AC 220 - 230 V, 50 Hz
Rated Power Consumption	35W (natural humidifaction)
Mode	Artificial Intelligence, Sleep, Baby, Health protection
Humidity	250ml/h
Water Tank Volume	4 Liter
Continuous Humidifying	18h
Suitable for rooms up to	35m² / 90m³ / 375ft²
Weight	6,4 Kg
Dimension(mm)	380(width)X207(length)X396(height)

## Contents

<b>Before using</b>	Caution for the Safety ..... 04
	Name and Function of each part..... 10
<b>Using</b>	How to install ..... 12
	Preparation before using ..... 13
	Notice ..... 14
	How to use ..... 15
	How to clean ..... 19
<b>Before reporting the trouble</b>	If regarded as the trouble ..... 23
<b>Service Guide</b>	Guide to the compensation for the customers' damage / About Paid Service ..... 26

# Caution for the safety

- Make sure to follow the indications below because they are for preventing unexpected risk or damage by using the products exactly.
- Caution related to the safety can be divided as follows depending on the size of expected risk in case of wrongly installing and damage and urgency level of risk.



Warning

In case of serious injury or death caused by the violation of the indication



Caution

In case of slight injury or damaged products caused by the violation of the indication



This picture symbol is the one to raise the awareness about the facts and organization which can pose a risk.



This picture symbol is the one that indicates the ban.



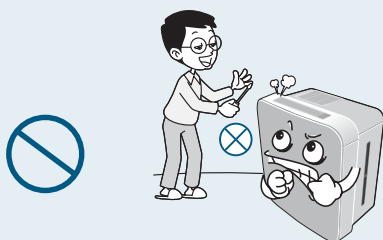
This picture symbol is the one that indicates obligatory compliance.



Warning

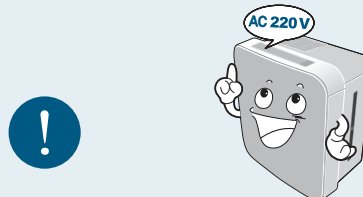
**Don't disassemble, repair and renovate at all.**

- Abnormal operation can result in electric shock, injury and fire.
- Consult with customer service center for repairing.



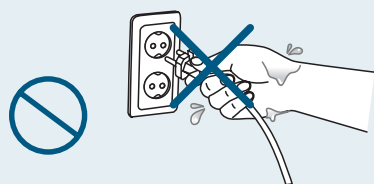
**Connect the power after identifying whether the voltage of the product is only for 220 - 230V and 50Hz.**

- It can cause a fire and electric shock.



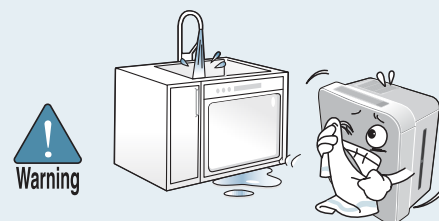
**Pull the plug out during the clean-up.**  
**In addition, don't pull out or put into the plug with wet hands.**

- It can cause a fire and electric shock.



**Don't soak the main frame into water or don't spray water on the main frame.**

- It can cause electric shock and fire.



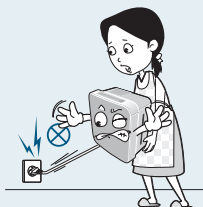




Warning

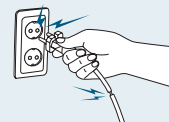
### Don't move the airwasher during its use.

- It can cause errors or electric shock.



### Don't use it when electrical cord or power plug is damaged or the electric outlet is loose.

- It can cause electric shock, electric short and fire. In case of damaged power cord, inquire it to the place you bought it and customer service center and exchange it with other product.



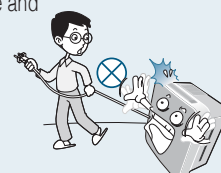
### Don't put foreign objects such as fingers or metal somewhere into discharge port and suction port.

- In particular, be careful for children not to put their fingers into the part because children can be hurt.



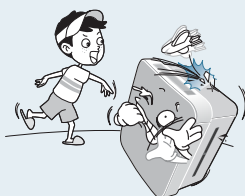
### Don't damage, process, bend by force, pull, twist or tie the cord line. And don't put heavy things over or put heavy things into cord.

- Damaged cord can cause fire and electric shock.



### Don't let infants go closer to, touch or manipulate the product.

- It can cause electricity or injury.



### When pulling the plug out, don't hold the cord and make sure to pull the plug out after holding the front of plug. And use it after cleaning up dirt or foreign object in power plug.

- It can cause electric shock or short, triggering fire.



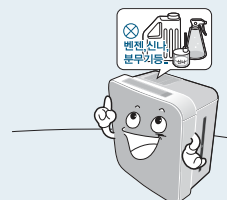
### Replace the water of the tank with new water.

- Keep the water tank clean by cleaning it up daily and put tap water into water tank.
- You can use tap water.
- Using the product without clean-up can be a major cause of bad smell with fungi or various germs prospering.



### Don't cleaning it with benzene and thinner or don't spray pesticide.

- It can cause the crack, electric shock and fire.



### Don't keep the product in the place where direct rays or heater can reach.

- It can cause the deformity, smearing and discoloration.

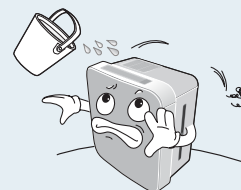


### Don't put water into nebulizer

- It can cause errors or injury, fire and electric shock.



Warning



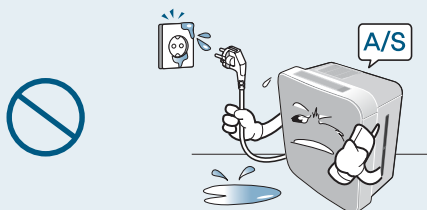
# Caution for the safety



Warning

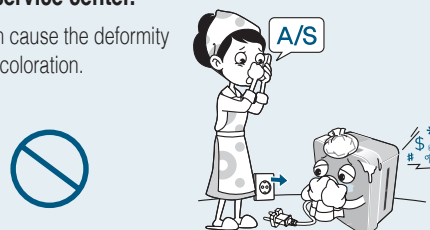
**When water is put into power supply part, pull the plug out and contact with service center.**

- It can cause electric shock and fire.



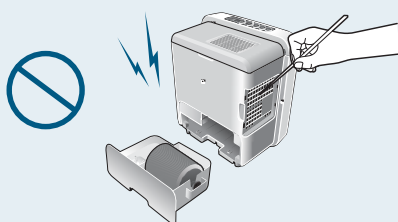
**When noise, burning smell and smoke come from the product, immediately cut off the power and contact with service center.**

- It can cause the deformity or discoloration.

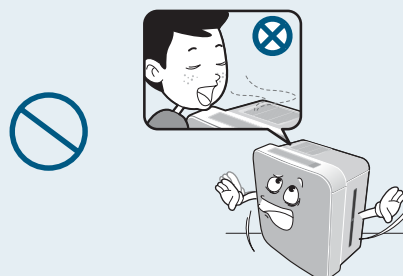


**Don't put other foreign subject such as metal into the product inside.**

- It can cause electric shock and injury.



**Don't take in the humidity from the product directly.**



**Don't install it in the place which is wet, dirty and the place where water or rainwater can be splashed.**

- It can cause electric shock and fire.



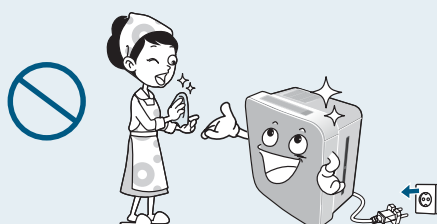
**Don't use it with the power plug of various products put into one electric outlet at the same time.**

- It can cause errors and fire.



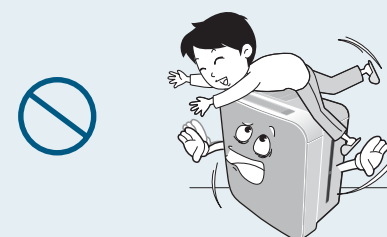
**When cleaning up, cut off the power and clean it up after the fan stops swinging.**

- It can cause electric shock and injury.



**Don't sit on or lean against the body frame.**

- It can cause the damage.

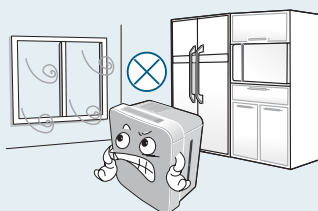




Caution

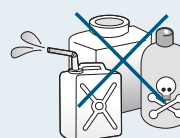
**Don't use it in a place where wind blows from window and air conditioner. Avoid the place where humidity from the product can contact with ceiling, wall, furniture, electronic appliance directly.**

- It can cause the sensor of the humidity not to work.



**When noise, burning smell and smoke come from the product, immediately cut off the power and contact with service center.**

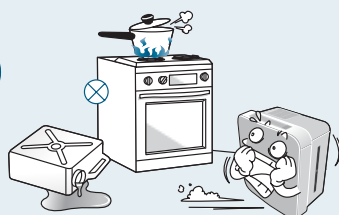
- It can cause deformity or discoloration.



Chlorine, acid type and others

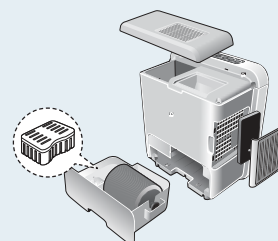
**Don't put combustibles, burning cigarette, incense near the product.**

- It can cause a fire.



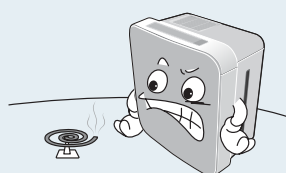
**Make sure to put the parts into the original place after clean-up. (Refer to from 19 to 22 page)**

- Don't operate it with humidity filter, ECO filter, water tank and cover eliminated. It can cause errors.



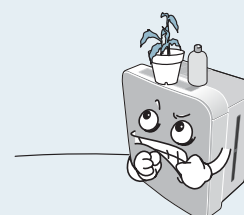
**Don't use the product when pesticide of indoor smoking or fuming type is used.**

- As the material cumulated in the product can be emit from discharge port, it can harm the health.



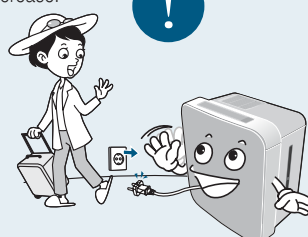
**Don't put things over the product.**

- It can cause injury, electric shock and errors.



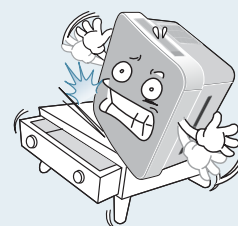
**When it is not used for a long time, pull the plug out and dump the water remaining in body frame such as water tank.**

- It can cause electric shock and fire.
- Fungi or various germs may increase.



**Install the product on the floor which is strong and flat.**

- It can cause the product fallen or water spilt. Falling product can cause water inside to overflow and it can cause fire or electric shock.



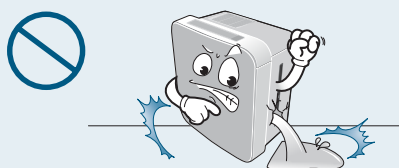
# Caution for the safety



Caution

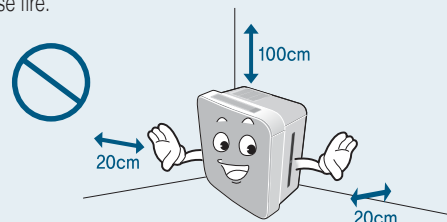
## Don't use damaged water tank with no change.

- It can cause water to drop from the product or water to overflow in the water tank, triggering electric shock and errors.



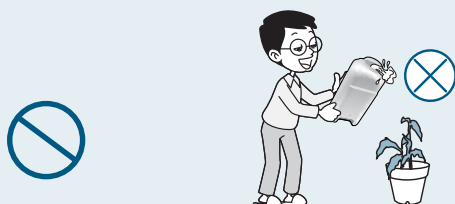
## When using the product, don't use with the side with filter and wall facing.

- If the room is not ventilated well, the poor performance can cause fire.



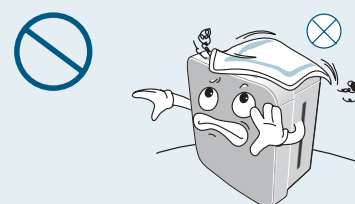
## Don't drink the water remaining in the body frame such as water tank.

- It can cause water quality to be worse and cause another unexpected accident.



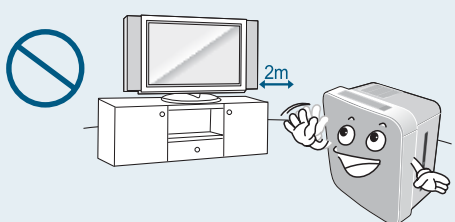
## Don't block the discharge port.

- Don't block the discharge port with curtain or towel. It can cause errors.



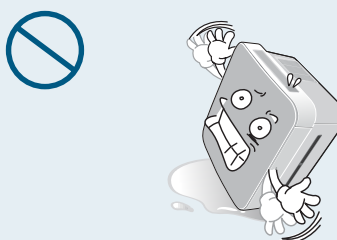
## Don't use it near the place where magnetic field is strong such as microwave or TV.

- It can cause the sensor not to work properly.



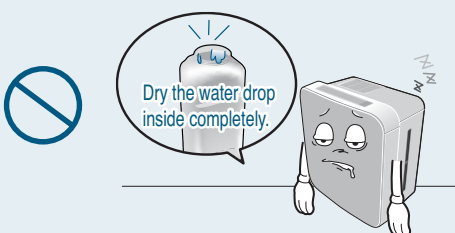
## Don't fall the body frame.

- Use after pull the plug of falling product out and dry it well.



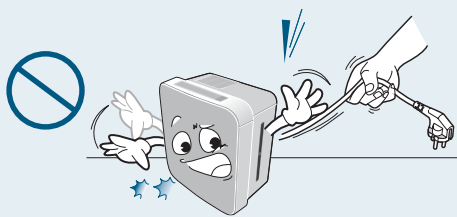
## When the product is not used, don't keep it for a long time with water kept in water tank.

- Fungi or various germs may increase.



## Don't move the product by pulling power cord.

- It can cause electric shock and fire.





Caution

**Use it after drying completely when water is put into the power supply part.**

- It can cause electric shock and fire.

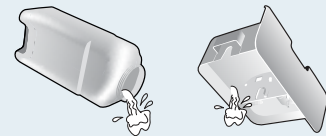


Completely dry!



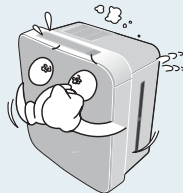
**Dump water in case of the concern for freezing.**

- When it can be frozen, dump water remaining in body frame such as water tank. Frozen product can cause errors.



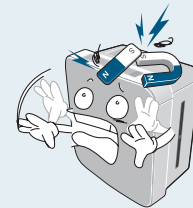
**Dump the water remaining in body frame such as water tank during its move.**

- Moving the product with water remaining in the body frame can cause water to overflow



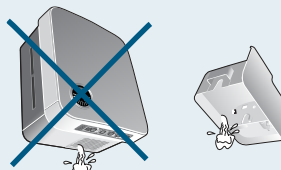
**Don't put magnet or metal over the body frame.**

- It can cause errors.



**Don't drain water remaining in the water tank by holding body frame and drain water by eliminating water tank.**

- Water putting into body frame can cause errors.



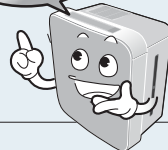
**Clean it up on a regular basis.**

- Clean it up according to 'How to clean up'. (Refer to from 19 to 22 pages)
- Serious contamination can cause increasing fungi, bad smell, and low humidity.



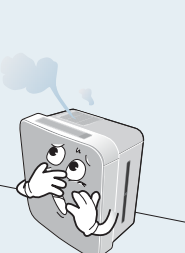
**Use clean tap water rather than water hot at 40 °C or contaminated with salt, detergent and drug.**

- Using water of over 40°C can cause errors of product.



**Don't use for the special purpose of preservation and business such as food, art work and academic journal.**

- It can cause low quality.



## Name & Function of Each Part

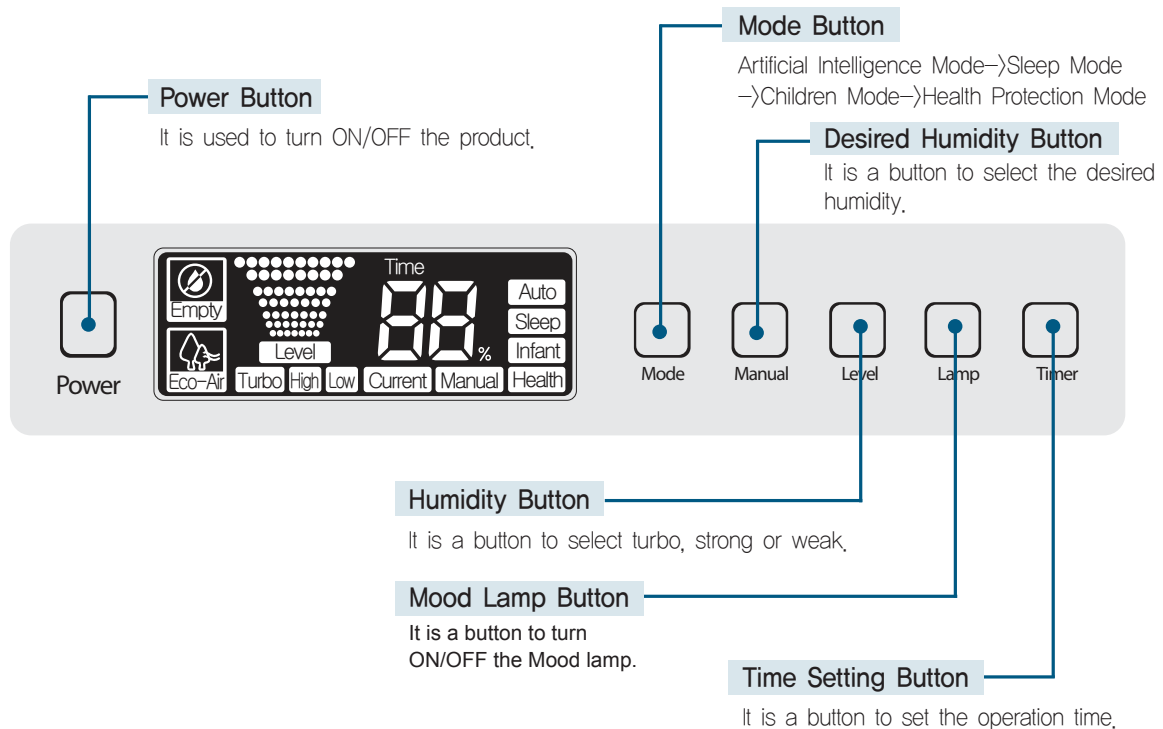
Before Use

### Names of Whole/Inner Parts

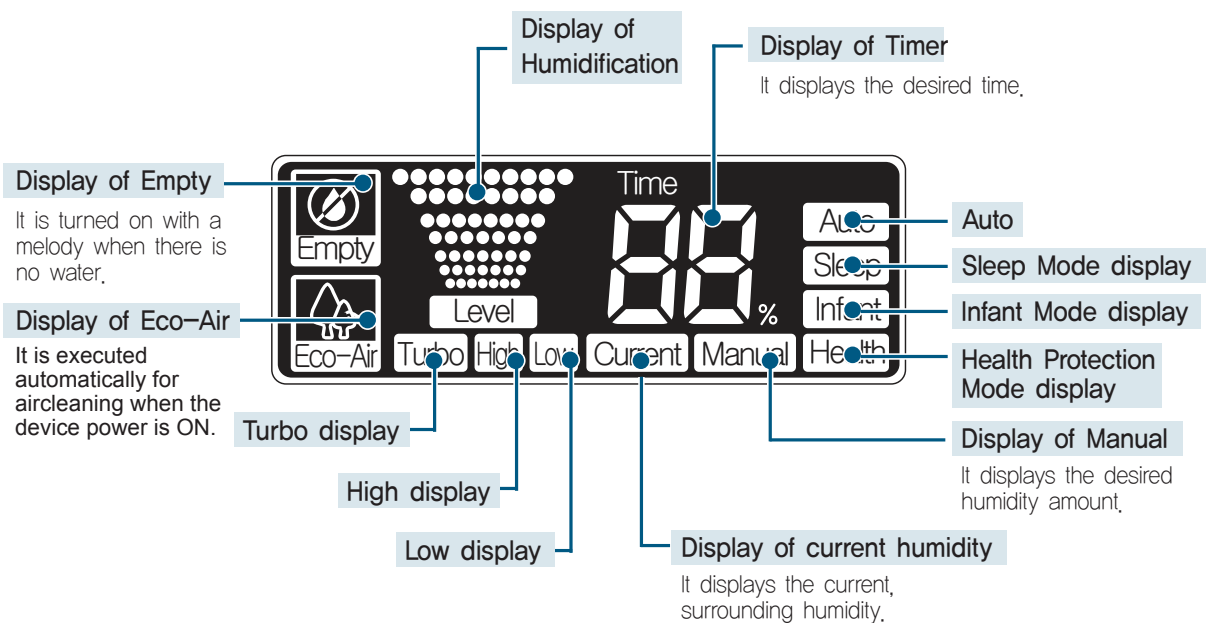


## Name and function of each part

### Operation Part



### Function Display Part



## ● The body should be installed on a firm and flat floor and where the air circulates well.

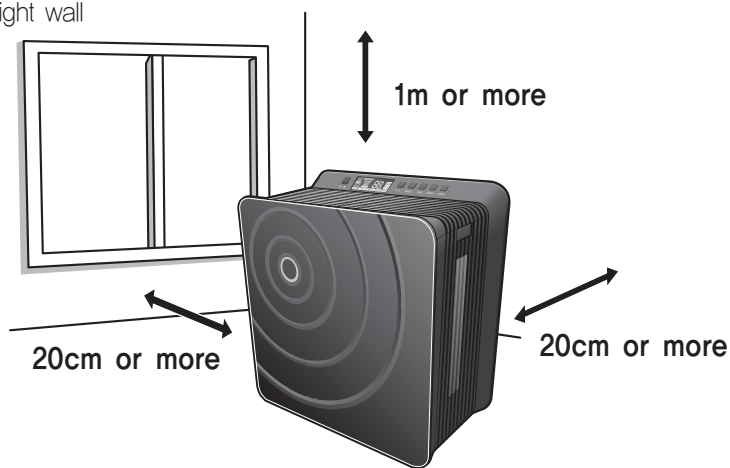
► If the body is installed at the wall facing the center of a room, more effective air current will be generated.

- 1m or more from the ceiling
- 20cm or more from left/right wall
- 30cm at the front part



Cautious

Do not block the side filter.



Cautious

- When moving the body or not using it for a long period of time pull out the power plug and remove the water from the water bottle/water tank part (It may overflow or the molds and various germs may reproduce)
- Do not tilt the body when using it. It may not function or the water may overflow
- Do not install in a condition where it may block the air inlet and outlet part.
- It should be installed 2m or more away from the AV devices such as a television, radio and so on. (If it is near those devices, there may a noise.)
- If it is near a speaker or electronic cooker where much electromagnetic wave is generated, the water level sensor may malfunction resulting in inaccurate water supply period
- Do not use it where there is a direct sunlight and near a heater. It may lead to change of form and color.
- The body should be installed in a flat place. If it is installed in a tilted floor, the water level sensor may be operated resulting in stop of operation.

## ● Use it indoor with low humidity.

► If it is operated at a place with high humidity, it will not function due to detection of humidity sensor.



## Preparations before Use

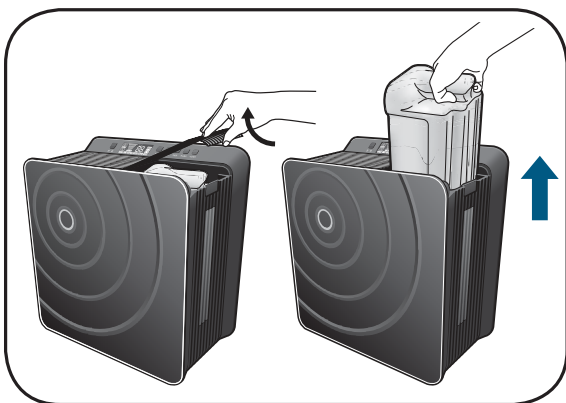


Do not put flammable substances inside the water tank. It may ignite.

### Water Supply Method

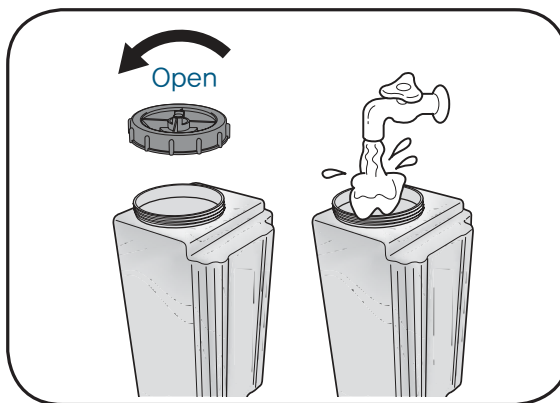
- Replace it with new water every day and always use it clean

- ① Open the watertank cover and pull the water bottle out.



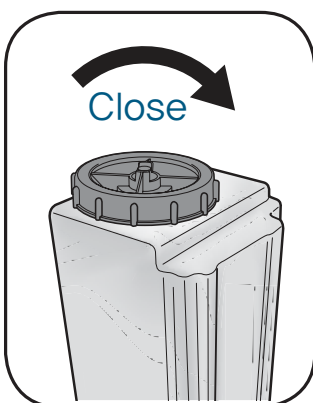
- ② Open the watertank lid and fill in the tap water.

- First pull out the water tank when disassembling the water tank part.



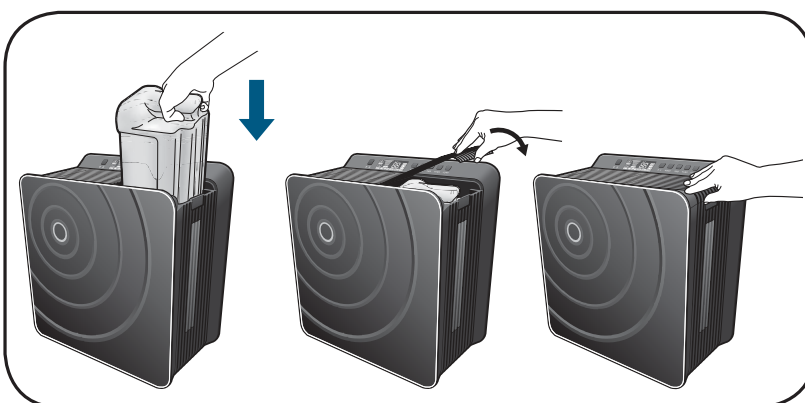
- ③ Close the watertank lid.

- Make sure that the lid is firmly closed.



- ④ Put the water tank in the body and close the cover.

- Insert in a right direction marked on the water tanke handle and place it from the rear part of the water tank cover



Cautious

- Must use tap water with temperature below 40°C.
- It is prohibited to use chemicals, dirty water and water with aromatics or detergents and so on.
- It may change the form of body and result in breakage.

## Evaporative humidifying system

- **There is no vapor to be seen.**
  - Since it is a natural evaporation without boiling the water, there is no vapor to be seen.
- **The air coming out of a ventilation opening is not warm.**
  - Since the heat of absorbed air is lost during the evaporation, the emitted air is not warm. It may be cool depending on the size of a room.
- **The amount of humidification changes based on the temperature or humidity conditions.**
  - The amount of humidification may be reduced if the indoor humidity is high or the temperature is low.
  - When it is operated for more than 2 hours at humidity of 80%, it switches to a weak humidification.



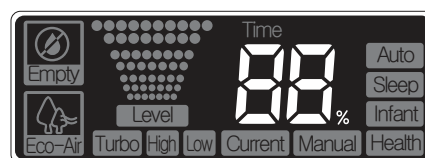
## Operation of Sensor

- **It is operated automatically based on the surrounding humidity.**
  - It detects the current, surrounding humidity automatically and maintains the optimal humidity in a set mode.
  - The humidity can be displayed differently in the same indoor environment due to a temperature difference or air current and so on.

## Display of Indoor Humidity ● It displays the current, indoor humidity.

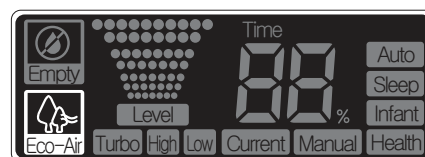
### ● Current Humidity Display Lamp

- It is a humidity sensor of an inner body to display the measured humidity status.
  - The humidity may change depending on the location even in the same indoor environment due to a temperature difference, air current and so on.
  - It may display a different figure when compared to other hygrometers.
  - Since it is influenced by the temperature or humidity of inner body right after the operation, it takes a while for the current humidity display to be stabilized.



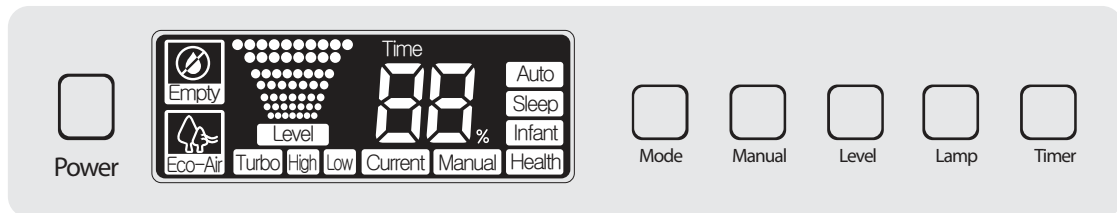
### ● Eco-Air Display Lamp

- It displays that the air will be purified



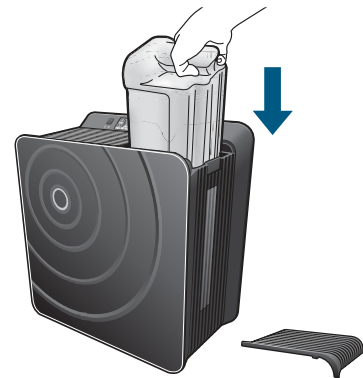
# How to Use

## Operation Part Buttons



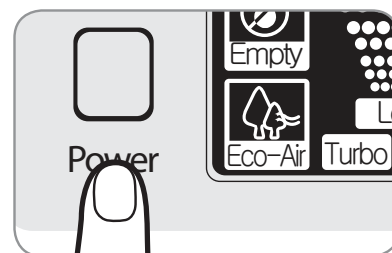
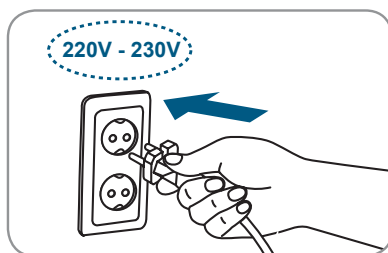
- Put the watertank inside the body.

※ It requires 20 seconds for the water to be filled in the water tank after the water tank is put inside the body. Plug in the power and operate when "Empty" display is disappeared.



- Plug in the power plug at 220V -230V only socket and press the Power Button. It is operated with a melody.

- Initial setting is [Manual Mode/ECO-AIR /Humidification-Turbo./Time-Co]
- After plugging in, create a pleasant indoor environment based on the operation method.
- Keep it plugged out, when not using it.
- When the power cord is plugged out in force during its operation, the outlet part will not be closed. You must press the power button to turn it off.



### Consideration Points

- More pleasant moisture can be obtained if water that is completely cooled after boiling or tap water that is kept for a day is used.
- When not using it for a long period of time, remove the water from the water bassin and water tank.

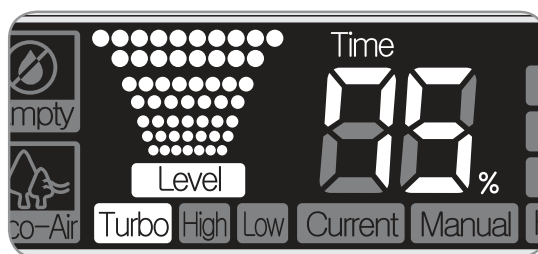
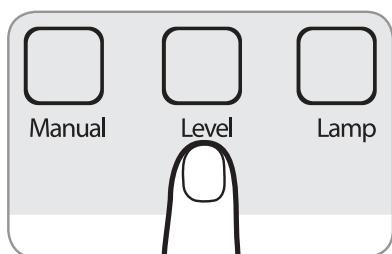
## How to use 'Humidification'



### Consideration Points

- If the initial indoor humidity is less than 30%, select 'Turbo' using 'Humidification' button to increase the indoor humidity quickly.
- The initial setting is in 'Turbo'.

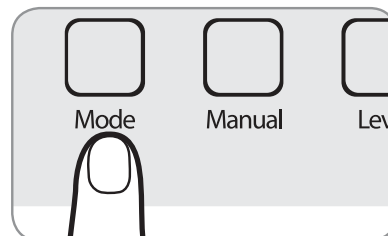
- Adjust the amount of humidification by pressing the 'Humidification' (Level) button.
  - If the humidification level button is pressed, it is displayed in sequence of Low ->High->Turbo repeatedly.



## How to Use 'Mode'

- Press the Mode Button.
- It is operated in a sequence of

Auto → Sleep → Infant → Health → **Manual Mode**



**Auto** → It repeats 'Turbo/High/Low' of humidification to maintain the indoor humidity to 55%.

**Sleep** → Low-noise state appropriate for sleeping and it turns OFF the Mood Lamp

**Infant** → It repeats 'High/Low' of humidification to maintain humidity suitable for Infant.

**Health** → It repeats 'Turbo/High/Low' operation of humidification to maintain the optimal humidity for cold and skin protection.



No Water Lamp Flashes: Remove the remaining water in the water bassin, supply water in the water tank and put it back. When the water is supplied completely, start the operation. (Turn the power OFF when moving the water tank and water bassin.)

## How to use

### How to Use 'Time Setting'

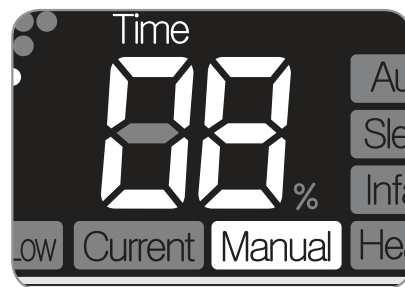
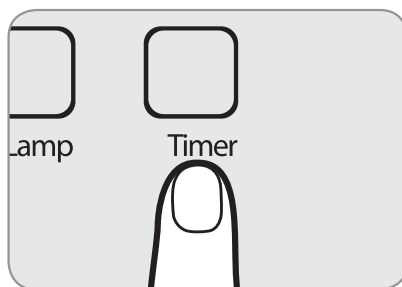


#### Consideration Points

- The difference between the set time and current time should be within 8 hours.
- If it is short of water, the operation is stopped before the set time.

#### ● Press the 'Timer' Button to set the operation time.

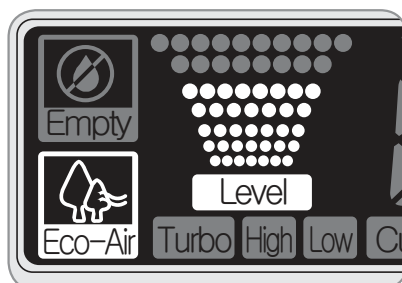
- When the 'Timer' button is pressed, it is displayed in this sequence repeatedly: Co(Continuous)→01→02→03→04→05→06→07→08→Co(Continuous).
- When it is the set time, the humidification stops automatically and the time is displayed.
- When it is short of water, Empty is displayed with a melody and the humidification stops.
- When the humidification time and desired humidity are set, 'operation/stop' of humidification is repeated based on the desired set humidity.



### How to Use 'Eco-Air'

#### ● It does not need separate setting.

- When the power is ON, clean air is emitted automatically.



## How to Use 'Manual'

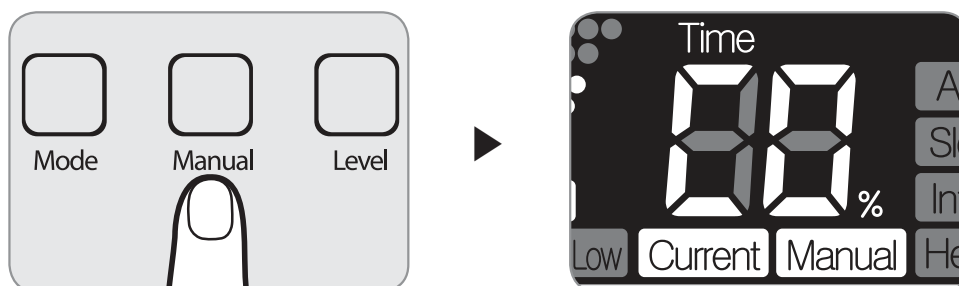


### Consideration Points

- It is possible to adjust the indoor humidity that the user wants.
- The initial humidity is set as Co (continuous).
- When the Manual button is pressed, it is automatically switched to the manual mode.

#### ● Press the Manual button to use it.

- When this button is pressed, it is displayed in this sequence repeatedly:  
Co→40→45→50→55→60→65→70→75.



- ※ If the desired humidity is lower than the current indoor humidity, it will not be humidified any more. Press the Manual button to set it higher than the current indoor humidity.
- ※ When the current humidity exceeds the desired humidity, the humidification stops and the current humidity and desired humidity are displayed alternately.

#### ● Desired Humidity based on Indoor Humidity (%)

Indoor Humidity	38~42	43~47	48~52	53~57	58~62	63~67	68~72	73~77	78% or more
Select Desired Humidity	40	45	50	55	60	65	70	75	Co (Continuous)

## How to Clean



Warning

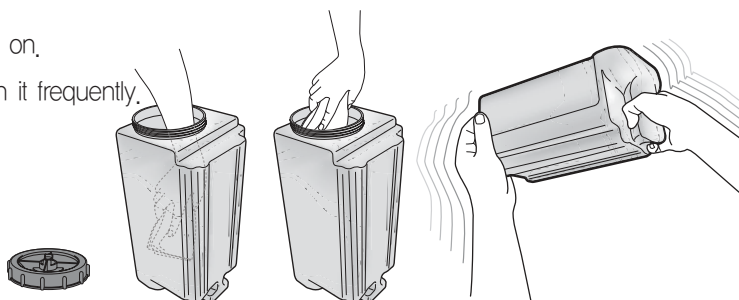
Before cleaning you **MUST** pull out the power plug.

※ Clean it periodically. If it is severely contaminated, it may lead to low performance or trouble and bad smell.

### Watertank (Daily)

- Fill the tank with water, close the lid and shake for 4~5 times.

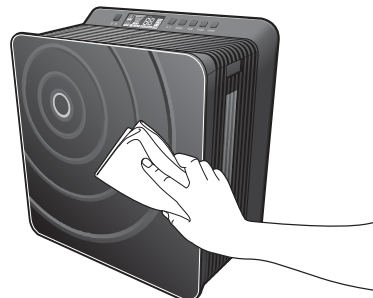
- Do not add chemicals and so on.
- Put your hands inside to clean it frequently.



### Body (When it gets dirty)

- Lower the concentration of neutral detergent used in the kitchen and wet the soft cloth with it. After wringing out the cloth, use it to clean the body. Then, clean it using a dry cloth.

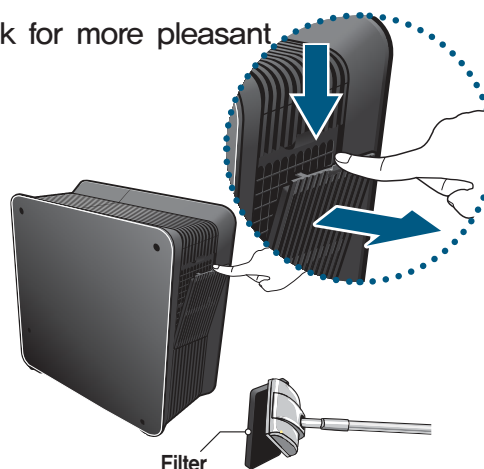
- Do not use Benzene, alkaline detergent, washing powder and so on to prevent the change of form and color.



### ECO-Air Plus Filter

- It is recommended to clean it once a week for more pleasant humidification.

- Remove dust on the surface of ECO-Air Plus Filter using a cleaner or a soft brush.
- Do not clean the ECO-Air Plus filter with water. If it is cleaned with water, it may lead to bad performance.
- Do not use it without the ECO-Air Plus filter.
- Exchange the Nano-Zilver filter 1x per year
- Exchange the ECO-Air Filter 1x per 6 months



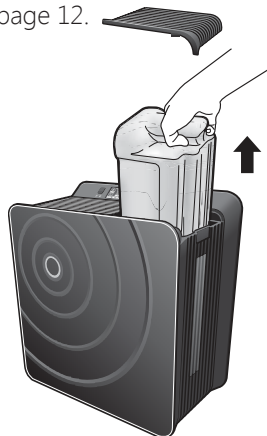
#### Where to order?

<https://www.cleanairoptima.com/accessoires/mg/44/>

## Clean the waterbassin twice per week

### ① Pull out the water tank cover and water tank.

- Refer to the method on disassembling the water tank on page 12.



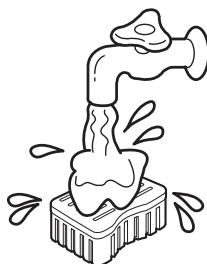
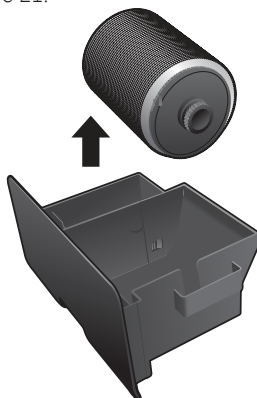
### ② Pull out the waterbassin.

- The water tank should be taken out first before you can remove the waterbassin.



### ③ Pull out the humidification filter (Rotor).

- when the spaces of humidification filter (Rotor) are dirty, clean them in reference to page 21.



- Clean Nano-Zilver filter with tap water

### ④ Remove water inside the waterbassin

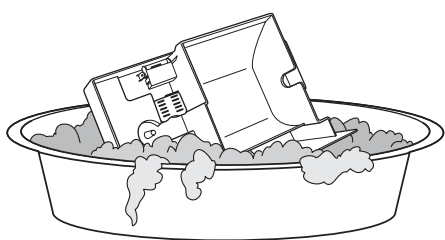
- Remove the water after taking out the humidification filter (Rotor) and Nano-Zilver filter first.



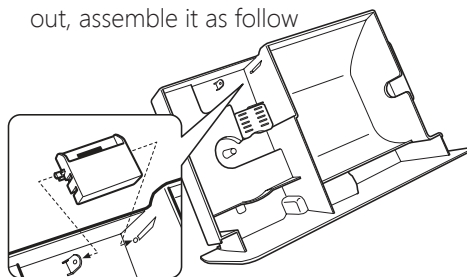


## How to clean

- ⑥ Use a soft sponge to clean the water bassin.



- When the water level sensor is fallen out, assemble it as follow



- ① Place the water level sensor under the projected part.
- ② The axis part of water level sensor should be inserted to the water tank hole.
- ③ The opposite axis part of water level sensor should be inserted to the water tank hole.

- ⑦ Put in the humidification filter (Rotor) and install the water bassin in the body.

- Check the insertion direction when putting the humidification filter in the water tank.
- When the water bassin isn't inserted first, the water tank cannot be installed.



- ⑧ Put the water tank and water tank cover in the body.

- Check the insertion direction of water tank before putting it in.



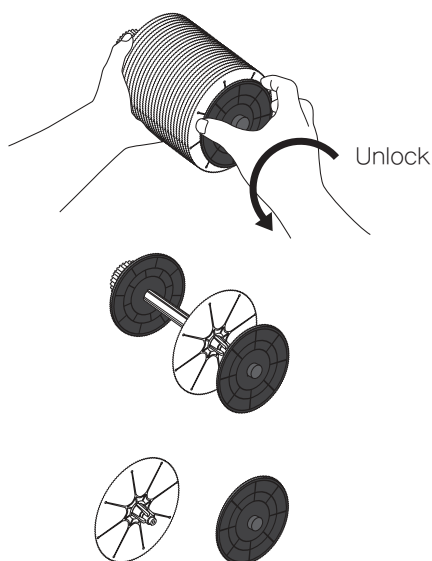
## Clean the humidification filter (Rotor) 2 - 3 per week



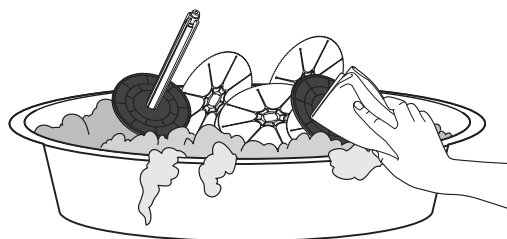
### Consideration Points

- There may be sphagnum depending on the water quality. If it is severely contaminated, clean it.
- Do not use Benzene, Thinner, alkaline detergent, detergent to remove molds, power soap and so on.
- ※ To remove the humidification filter (Rotor) of water tank part, refer to page 20.

① Disassemble the humidification filter (Rotor).



② Soak the humidification filter (Rotor) in the water and clean it using a soft sponge.

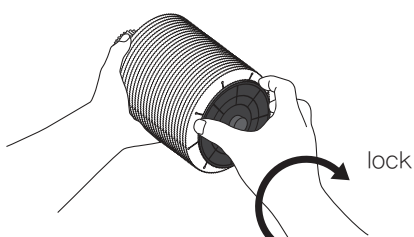


### 〈How to Clean the Humidification Filter〉

If the stain cannot be removed, it should be soaked in warm water (under 40°C) with dissolved neutral detergent for about 3 hours and rinse away with clean water. (If it is boiled in the water or cleaned in hot water, there may be a change to the form.)

③ Assemble the humidification filter (Rotor).

① Insert the humidification filter to the groove of axis part.



② After inserting the right plate to the groove, lock it

④ After putting the humidification filter (Rotor) in the water bassin, put the watertank and watertank cover in the body.

- Put the watertank in the body after placing the water bassin first.

② Place the watertank and water tank cover.



① Install the humidification filter (Rotor) and watertank.

# What if you think there are errors?

Using



- If you think there is an error even after the check as follows, stop using to prevent the accident. And then pull the plug out and contact with customer service center. Tel: +49(0)5921 878-121  
E-mail: [info@optima-luftreiniger.de](mailto:info@optima-luftreiniger.de)
- Don't repair it by yourself because it is a risk to repair the product at home.

Cases	Check as follows	Reference Page
Not working	<ul style="list-style-type: none"> <li>● Is the plug inserted into electrical outlet?</li> </ul>	
	<ul style="list-style-type: none"> <li>● Is the water tank part in the back installed well? → Make sure to install it.</li> </ul>	21P
	<ul style="list-style-type: none"> <li>● Is the lamp to supply water turned on? → Make sure to install the water tank part in the back. → Fill the water tank with water.</li> </ul>	15P
Can't turn the lamp for complementing the water on	<ul style="list-style-type: none"> <li>● Is the water tank containing water? → Fill the water tank with water.</li> </ul>	13P
	<ul style="list-style-type: none"> <li>● Is the water tank part missing? → Insert the water tank part to the end.</li> </ul>	21P
	<ul style="list-style-type: none"> <li>● Is sensor of water level missing? → Install the sensor of water level.</li> </ul>	21P
Leaking water	<ul style="list-style-type: none"> <li>● Is the cap of water tank closed well? → Check the cap of water tank.</li> </ul>	13P
	<ul style="list-style-type: none"> <li>● Is the body frame leaned? → Use the body frame in a flat place.</li> </ul>	12P
Staining (powder) inside the water tank	<ul style="list-style-type: none"> <li>● It is the material accumulated with dirt or hard material due to the long term use. → Make sure to clean up periodically.</li> </ul>	19~22P
Sounds operation even in when stopped	<ul style="list-style-type: none"> <li>● Is splashing sound heard? → It comes from the water tank by filling water. (it is not error)</li> </ul>	
A low humidity	<ul style="list-style-type: none"> <li>● If the indoor humidity is high or temperature is low, the humidity can be reduced.</li> </ul>	14P
	<ul style="list-style-type: none"> <li>● Is air filter closed? → Depending on how to clean up, clean up and use the device.</li> </ul>	19P
	<ul style="list-style-type: none"> <li>● You can feel that humidity is low during its use in a spacious place.</li> </ul>	



#### Environmental information

This product may not be disposed at the end of his life with normal household waste but must be brought to a collection point for the recycling of electrical and electronic equipment. The symbol indicates this on the product, the instruction manual or the packaging.

The materials are reusable in accordance with their labeling. By recycling, material recycling or other forms of utilizing old devices you make an important contribution to protecting our environment

Please ask for the appropriate disposal center at the town hall.

## Service

### **Warranty**

Clean Air Optima ensures your airwasher from defects in materials and / or workmanship for up to two years after initial purchase. If material or manufacturing faults occur, they are solved by Clean Air Optima or Clean Air Optima provides a replacement device with the same or better properties. The guarantee covers any damage caused by carelessness in handling, accident, abuse, lack of cleaning and maintenance or other use that is not obviously compatible with the information in these instructions for use instructions for use. Furthermore, the general commercial law does. We recommend in case of failure, along with the original sales receipt plus brief description of the defect found, return the instrument. Take in this case, your supplier or, if that is not possible with Clean Air Optima contact. If the defect in the device to something other than material and / or workmanship be due, processing or repair costs will be billed.

### **Contact**

Clean Air Optima Germany GmbH  
Enschedestraße 14  
48529 Nordhorn  
Germany  
[info@optima-luftreiniger.de](mailto:info@optima-luftreiniger.de)  
[www.optima-luftreiniger.de](http://www.optima-luftreiniger.de)



Clean Air  
*Optima*®

